

MARKET HISTORY

Includes data through 10/2017

Berks County, PA Single-Family



Market History Report

The Market History Report details current and historical statistical information for single-family listings recorded within TREND. This statistical report is organized by county and contains valuable month-over-month, year-over-year statistical information for each of the last 10 years. The Market History Report details activity in a particular market over a 10-year period – from where it's been to where it's at now. The easy-to-read month-over-month, year-over-year chart and graph enables you to clearly identify the year-over-year changes while accounting for seasonal and market trends.

Utilizing the report allows you to gain a better understanding of your market. This will give you new insights and increase your company's value when working with consumers. This powerful report is provided exclusively to TREND members.

Contents

Total Inventory	3
Inventory Accumulation	4
Pending Units	5
Settled Units	6
Total Settled Volume	7
Median Settled Price.....	8
Average Settled Price	9
Average Settled Price / Original Price.....	10

Definitions

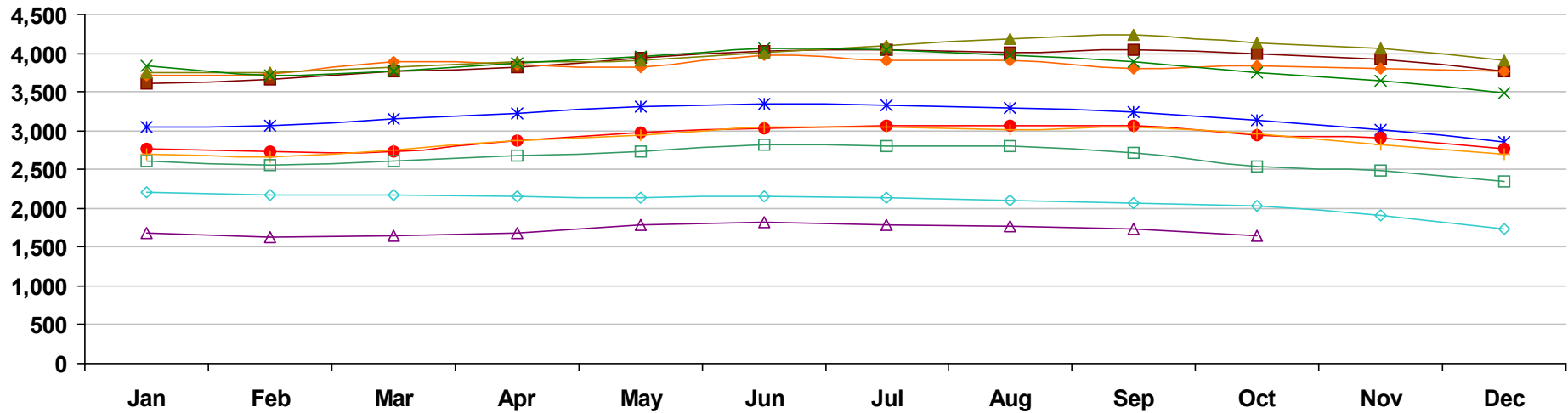
Total Inventory	The number of active single-family listings on the market on the last day of the specified month.
Inventory Accumulation	The number of months it would take to exhaust the current supply of single-family listings at the current absorption rate.
Absorption Rate	The average number of single-family listings sold in the market per month over the previous 12 months.
Pending Units	The number of single-family listings with Pending dates during the specified month.
Settled Units	The number of single-family listings with Settled dates during the specified month.
Total Settled Volume	The total dollar volume of single-family listings that have settled during the specified month.

Median Settled Price	The median price that single-family listings settled for during the specified month. Determined by arranging all Settled Listings in numerical order by price and then selecting the middle value.
Average Settled Price	The average price that single-family listings settled for during the specified month. Determined by dividing the Total Settled Volume by the number of Settled Listings.
Average Settled Price / Original Price	The average percentage of the Original Price that single-family listings settled for during the specified month. This number is determined by dividing the Settled Price by the Original Price for every listing, summing them and then dividing by the number of settled listings. TREND excludes listings if the Settled Price is greater than 150 percent or less than 50 percent of the Original Price. This ensures the percentage is more representative of listings in the market area.
Percent Change	The change in value as compared to the same month of the previous year. Indicated by +/-0.0%.

Notes on Statistics

- All statistics are from TREND's monthly Residential Activity Reports. Due to the fluid nature of MLS data, insignificant statistical variations may occur with regard to sales activity between the various TREND reports.
- Mobile homes and condominiums are excluded from these statistics.
- This report includes information on listings and transactions facilitated through TREND and does not reflect the total number of listings and transactions of a given market area.
- All monetary statistics are rounded to the nearest \$10.

Berks County, PA - Single-Family - Total Inventory

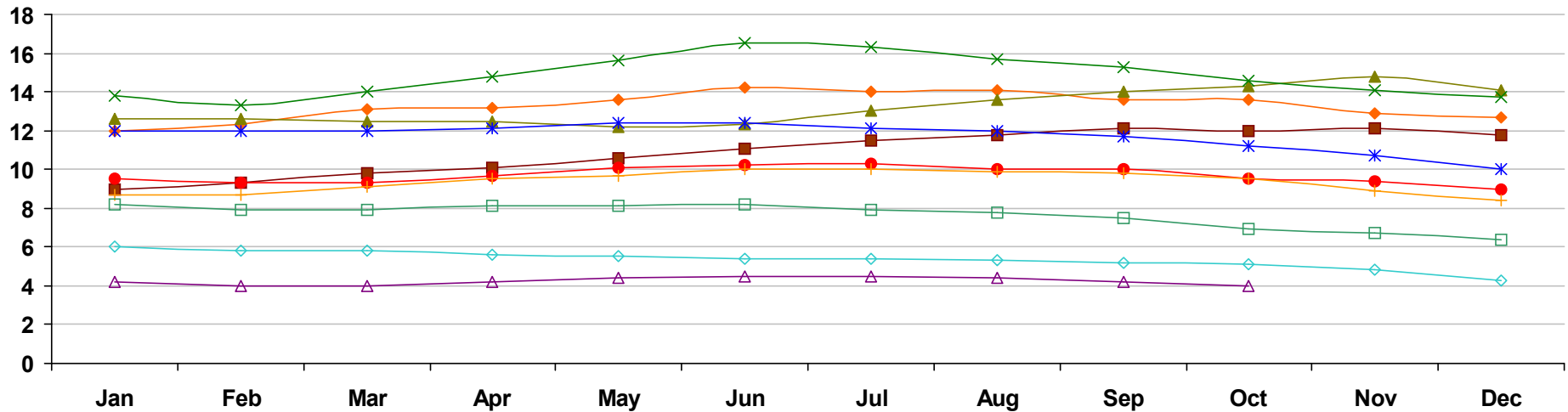


	Jan	Feb	Mar	Apr	May	Jun	Jul	Aug	Sep	Oct	Nov	Dec
2008	3,606 21.9%	3,656 23.6%	3,762 24.4%	3,822 19.5%	3,945 17.9%	4,019 16.8%	4,048 11.6%	4,007 7.5%	4,052 8.9%	3,999 6.6%	3,917 5.5%	3,758 6.6%
2009	3,717 3.1%	3,732 2.1%	3,887 3.3%	3,851 0.8%	3,818 -3.2%	3,969 -1.2%	3,911 -3.4%	3,913 -2.3%	3,800 -6.2%	3,832 -4.2%	3,798 -3.0%	3,761 0.1%
2010	3,740 0.6%	3,748 0.4%	3,812 -1.9%	3,883 0.8%	3,905 2.3%	4,015 1.2%	4,101 4.9%	4,178 6.8%	4,237 11.5%	4,135 7.9%	4,060 6.9%	3,912 4.0%
2011	3,834 2.5%	3,711 -1.0%	3,773 -1.0%	3,871 -0.3%	3,956 1.3%	4,057 1.0%	4,043 -1.4%	3,974 -4.9%	3,881 -8.4%	3,752 -9.3%	3,647 -10.2%	3,491 -10.8%
2012	3,053 -20.4%	3,059 -17.6%	3,156 -16.4%	3,216 -16.9%	3,315 -16.2%	3,339 -17.7%	3,327 -17.7%	3,291 -17.2%	3,232 -16.7%	3,132 -16.5%	3,011 -17.4%	2,860 -18.1%
2013	2,772 -9.2%	2,723 -11.0%	2,738 -13.2%	2,874 -10.6%	2,975 -10.3%	3,035 -9.1%	3,070 -7.7%	3,064 -6.9%	3,063 -5.2%	2,937 -6.2%	2,909 -3.4%	2,772 -3.1%
2014	2,696 -2.7%	2,662 -2.2%	2,741 0.1%	2,874 0.0%	2,949 -0.9%	3,039 0.1%	3,049 -0.7%	3,017 -1.5%	3,046 -0.6%	2,958 0.7%	2,824 -2.9%	2,697 -2.7%
2015	2,613 -3.1%	2,559 -3.9%	2,617 -4.5%	2,680 -6.8%	2,733 -7.3%	2,815 -7.4%	2,795 -8.3%	2,802 -7.1%	2,717 -10.8%	2,541 -14.1%	2,479 -12.2%	2,344 -13.1%
2016	2,207 -15.5%	2,164 -15.4%	2,177 -16.8%	2,153 -19.7%	2,140 -21.7%	2,152 -23.6%	2,140 -23.4%	2,104 -24.9%	2,067 -23.9%	2,037 -19.8%	1,909 -23.0%	1,739 -25.8%
2017	1,687 -23.6%	1,629 -24.7%	1,641 -24.6%	1,685 -21.7%	1,784 -16.6%	1,816 -15.6%	1,783 -16.7%	1,773 -15.7%	1,731 -16.3%	1,650 -19.0%		

Market History Report © 2017 TREND. Compiled 11/16/2017. Information deemed reliable, but not guaranteed. Non-members contact TREND for reprint permission.

TREND • 660 American Avenue, Suite 203 • King of Prussia, PA 19406 • 1-877-330-9900 • www.trendmls.com

Berks County, PA - Single-Family - Inventory Accumulation

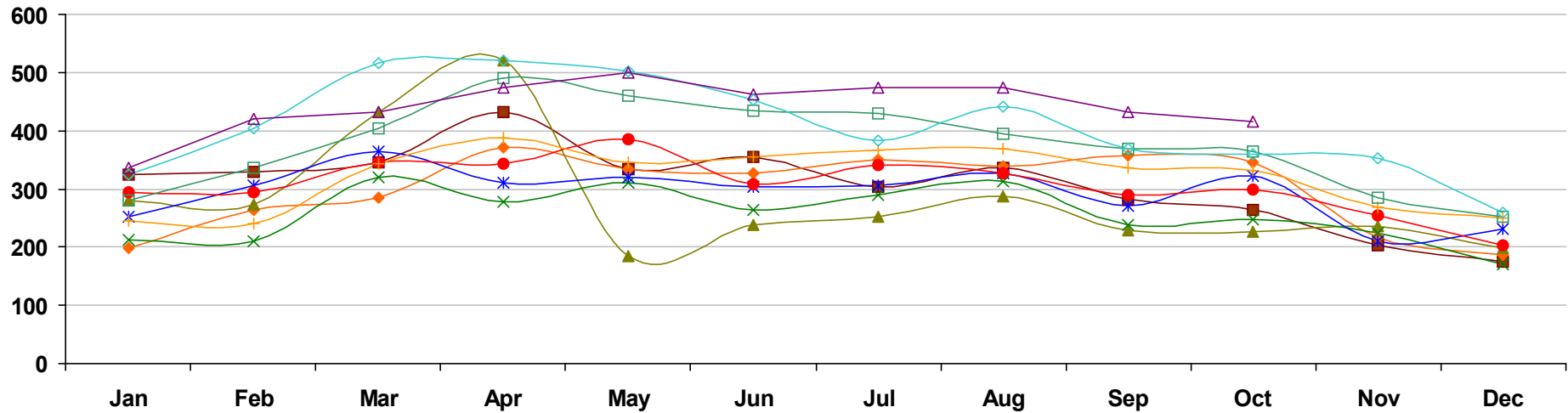


	Jan	Feb	Mar	Apr	May	Jun	Jul	Aug	Sep	Oct	Nov	Dec
■ 2008	9.0 38.5%	9.3 43.1%	9.8 46.3%	10.1 42.3%	10.6 41.3%	11.1 42.3%	11.5 38.6%	11.8 35.6%	12.1 37.5%	12.0 33.3%	12.1 34.4%	11.8 35.6%
◆ 2009	12.0 33.3%	12.3 32.3%	13.1 33.7%	13.2 30.7%	13.6 28.3%	14.2 27.9%	14.0 21.7%	14.1 19.5%	13.6 12.4%	13.6 13.3%	12.9 6.6%	12.7 7.6%
▲ 2010	12.6 5.0%	12.6 2.4%	12.5 -4.6%	12.5 -5.3%	12.2 -10.3%	12.3 -13.4%	13.0 -7.1%	13.6 -3.5%	14.0 2.9%	14.3 5.1%	14.8 14.7%	14.1 11.0%
× 2011	13.8 9.5%	13.3 5.6%	14.0 12.0%	14.8 18.4%	15.6 27.9%	16.5 34.1%	16.3 25.4%	15.7 15.4%	15.3 9.3%	14.6 2.1%	14.1 -4.7%	13.7 -2.8%
✱ 2012	12.0 -13.0%	12.0 -9.8%	12.0 -14.3%	12.1 -18.2%	12.4 -20.5%	12.4 -24.8%	12.1 -25.8%	12.0 -23.6%	11.7 -23.5%	11.2 -23.3%	10.7 -24.1%	10.0 -27.0%
● 2013	9.5 -20.8%	9.3 -22.5%	9.3 -22.5%	9.7 -19.8%	10.1 -18.5%	10.2 -17.7%	10.3 -14.9%	10.0 -16.7%	10.0 -14.5%	9.5 -15.2%	9.4 -12.1%	9.0 -10.0%
+ 2014	8.7 -8.4%	8.7 -6.5%	9.1 -2.2%	9.5 -2.1%	9.7 -4.0%	10.0 -2.0%	10.0 -2.9%	9.9 -1.0%	9.8 -2.0%	9.5 0.0%	8.9 -5.3%	8.4 -6.7%
□ 2015	8.2 -5.7%	7.9 -9.2%	7.9 -13.2%	8.1 -14.7%	8.1 -16.5%	8.2 -18.0%	7.9 -21.0%	7.8 -21.2%	7.5 -23.5%	6.9 -27.4%	6.7 -24.7%	6.4 -23.8%
◇ 2016	6.0 -26.8%	5.8 -26.6%	5.8 -26.6%	5.6 -30.9%	5.5 -32.1%	5.4 -34.1%	5.4 -31.6%	5.3 -32.1%	5.2 -30.7%	5.1 -26.1%	4.8 -28.4%	4.3 -32.8%
△ 2017	4.2 -30.0%	4.0 -31.0%	4.0 -31.0%	4.2 -25.0%	4.4 -20.0%	4.5 -16.7%	4.5 -16.7%	4.4 -17.0%	4.2 -19.2%	4.0 -21.6%		

Market History Report © 2017 TREND. Compiled 11/16/2017. Information deemed reliable, but not guaranteed. Non-members contact TREND for reprint permission.

TREND • 660 American Avenue, Suite 203 • King of Prussia, PA 19406 • 1-877-330-9900 • www.trendmls.com

Berks County, PA - Single-Family - Pending Units

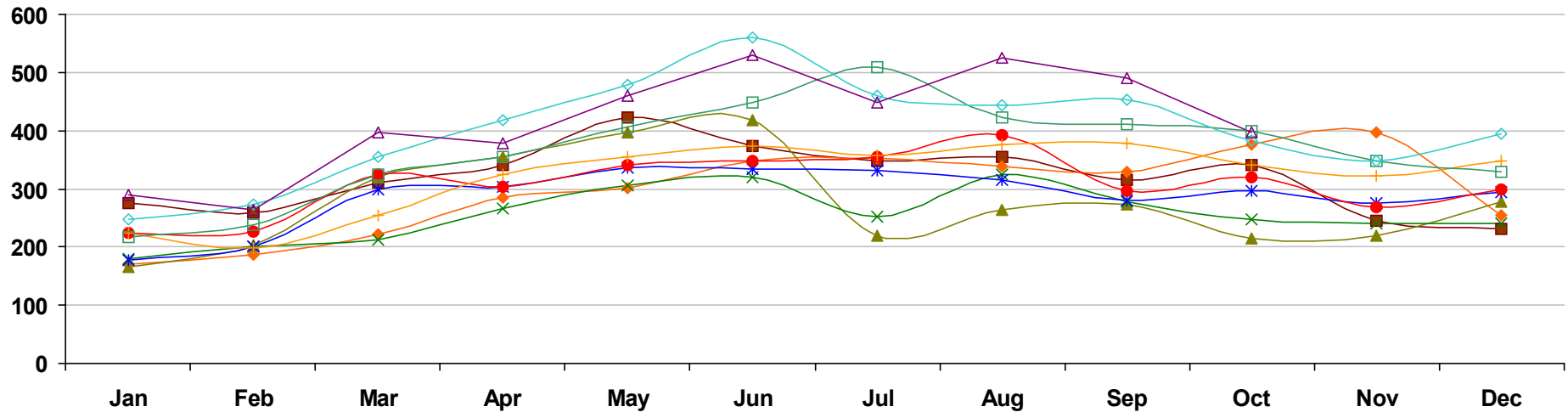


	Jan	Feb	Mar	Apr	May	Jun	Jul	Aug	Sep	Oct	Nov	Dec
■ 2008	324 -21.4%	330 -19.7%	346 -27.3%	431 -15.7%	335 -30.2%	355 -14.7%	304 -32.7%	336 -14.1%	283 -7.5%	264 -25.2%	203 -32.1%	176 -29.9%
◆ 2009	198 -38.9%	263 -20.3%	285 -17.6%	372 -13.7%	333 -0.6%	326 -8.2%	351 15.5%	339 0.9%	358 26.5%	346 31.1%	216 6.4%	187 6.2%
▲ 2010	280 41.4%	273 3.8%	433 51.9%	521 40.1%	184 -44.7%	239 -26.7%	253 -27.9%	286 -15.6%	228 -36.3%	226 -34.7%	236 9.3%	199 6.4%
✕ 2011	213 -23.9%	211 -22.7%	320 -26.1%	277 -46.8%	311 69.0%	263 10.0%	290 14.6%	313 9.4%	237 3.9%	247 9.3%	223 -5.5%	171 -14.1%
✱ 2012	251 17.8%	306 45.0%	364 13.8%	311 12.3%	321 3.2%	303 15.2%	306 5.5%	328 4.8%	271 14.3%	323 30.8%	211 -5.4%	232 35.7%
● 2013	293 16.7%	295 -3.6%	345 -5.2%	344 10.6%	386 20.2%	308 1.7%	342 11.8%	328 0.0%	289 6.6%	299 -7.4%	255 20.9%	203 -12.5%
✚ 2014	246 -16.0%	240 -18.6%	344 -0.3%	388 12.8%	346 -10.4%	355 15.3%	367 7.3%	368 12.2%	337 16.6%	332 11.0%	268 5.1%	250 23.2%
□ 2015	280 13.8%	337 40.4%	404 17.4%	490 26.3%	459 32.7%	435 22.5%	429 16.9%	395 7.3%	370 9.8%	364 9.6%	284 6.0%	252 0.8%
◇ 2016	325 16.1%	403 19.6%	517 28.0%	521 6.3%	501 9.2%	453 4.1%	382 -11.0%	441 11.6%	370 0.0%	359 -1.4%	352 23.9%	260 3.2%
△ 2017	336 3.4%	420 4.2%	433 -16.2%	473 -9.2%	500 -0.2%	463 2.2%	475 24.3%	473 7.3%	431 16.5%	415 15.6%		

Market History Report © 2017 TREND. Compiled 11/16/2017. Information deemed reliable, but not guaranteed. Non-members contact TREND for reprint permission.

TREND • 660 American Avenue, Suite 203 • King of Prussia, PA 19406 • 1-877-330-9900 • www.trendmls.com

Berks County, PA - Single-Family - Settled Units

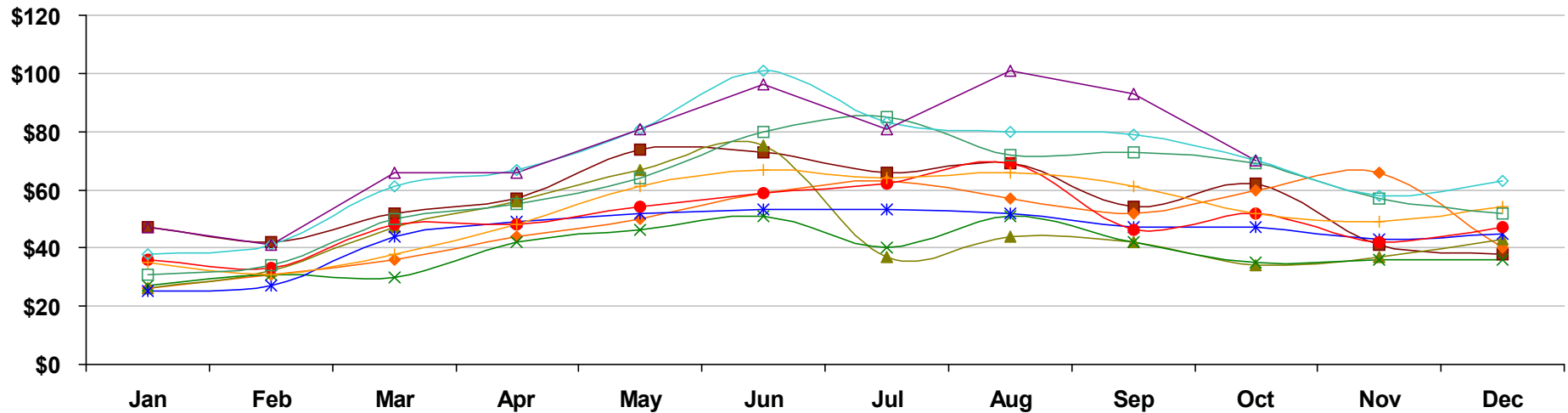


	Jan	Feb	Mar	Apr	May	Jun	Jul	Aug	Sep	Oct	Nov	Dec
■ 2008	276 -11.5%	258 -25.0%	310 -23.8%	341 -17.2%	423 -13.8%	374 -27.5%	347 -26.2%	356 -26.9%	316 -19.2%	341 -3.1%	246 -31.5%	230 -23.3%
◆ 2009	170 -38.4%	186 -27.9%	222 -28.4%	284 -16.7%	302 -28.6%	349 -6.7%	353 1.7%	338 -5.1%	330 4.4%	375 10.0%	398 61.8%	254 10.4%
▲ 2010	166 -2.4%	202 8.6%	319 43.7%	355 25.0%	398 31.8%	417 19.5%	220 -37.7%	264 -21.9%	273 -17.3%	214 -42.9%	220 -44.7%	278 9.4%
✕ 2011	180 8.4%	200 -1.0%	213 -33.2%	265 -25.4%	307 -22.9%	320 -23.3%	251 14.1%	324 22.7%	277 1.5%	248 15.9%	240 9.1%	241 -13.3%
✱ 2012	177 -1.7%	200 0.0%	300 40.8%	303 14.3%	337 9.8%	333 4.1%	332 32.3%	316 -2.5%	279 0.7%	297 19.8%	275 14.6%	294 22.0%
● 2013	224 26.6%	226 13.0%	324 8.0%	304 0.3%	342 1.5%	348 4.5%	354 6.6%	393 24.4%	296 6.1%	321 8.1%	269 -2.2%	298 1.4%
✚ 2014	224 0.0%	199 -11.9%	255 -21.3%	324 6.6%	354 3.5%	373 7.2%	358 1.1%	375 -4.6%	379 28.0%	342 6.5%	323 20.1%	347 16.4%
◻ 2015	216 -3.6%	239 20.1%	324 27.1%	355 9.6%	407 15.0%	448 20.1%	508 41.9%	423 12.8%	412 8.7%	400 17.0%	349 8.0%	329 -5.2%
◇ 2016	248 14.8%	274 14.6%	354 9.3%	419 18.0%	479 17.7%	560 25.0%	461 -9.3%	444 5.0%	452 9.7%	384 -4.0%	347 -0.6%	395 20.1%
△ 2017	289 16.5%	264 -3.6%	397 12.1%	378 -9.8%	459 -4.2%	529 -5.5%	449 -2.6%	526 18.5%	490 8.4%	398 3.6%		

Market History Report © 2017 TREND. Compiled 11/16/2017. Information deemed reliable, but not guaranteed. Non-members contact TREND for reprint permission.

TREND • 660 American Avenue, Suite 203 • King of Prussia, PA 19406 • 1-877-330-9900 • www.trendmls.com

Berks County, PA - Single-Family - Total Settled Volume



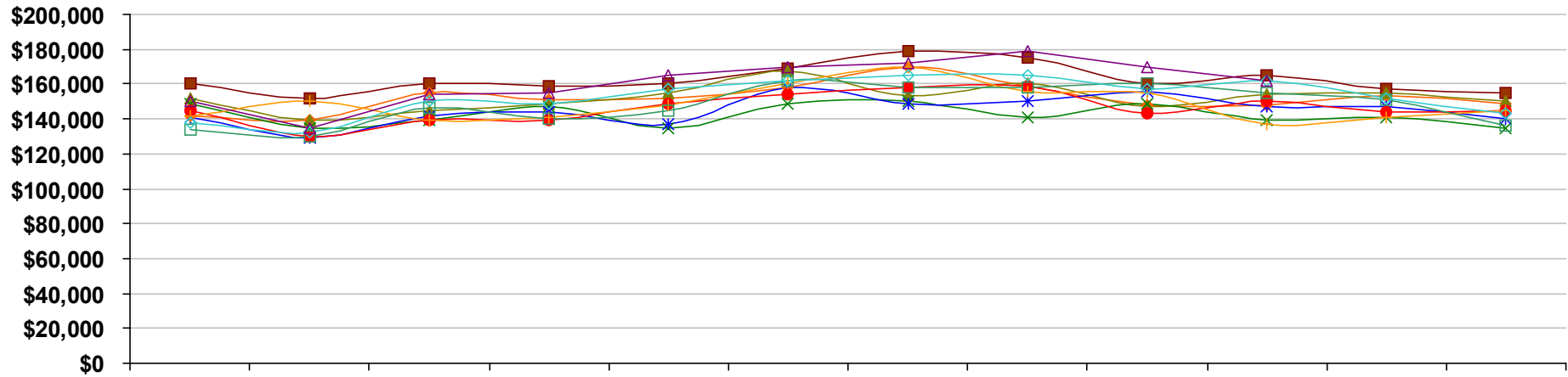
	Jan	Feb	Mar	Apr	May	Jun	Jul	Aug	Sep	Oct	Nov	Dec
■ 2008	\$47 -13.2%	\$42 -26.8%	\$52 -25.7%	\$57 -16.3%	\$74 -16.6%	\$73 -27.7%	\$66 -25.0%	\$69 -25.0%	\$54 -23.3%	\$62 -3.6%	\$41 -37.5%	\$38 -28.4%
◆ 2009	\$26 -46.0%	\$31 -27.6%	\$36 -30.1%	\$44 -22.6%	\$50 -32.0%	\$59 -18.6%	\$63 -5.1%	\$57 -17.1%	\$52 -2.7%	\$60 -3.5%	\$66 61.1%	\$40 5.6%
▲ 2010	\$26 -0.1%	\$32 3.3%	\$47 29.5%	\$56 25.8%	\$67 33.0%	\$75 26.0%	\$37 -41.0%	\$44 -23.4%	\$42 -19.5%	\$34 -43.6%	\$37 -44.4%	\$43 6.7%
✕ 2011	\$27 5.4%	\$31 -0.3%	\$30 -35.9%	\$42 -25.0%	\$46 -31.7%	\$51 -31.0%	\$40 6.5%	\$51 16.6%	\$42 0.9%	\$35 2.8%	\$36 -3.2%	\$36 -17.1%
✱ 2012	\$25 -6.7%	\$27 -12.8%	\$44 45.4%	\$49 16.6%	\$52 14.1%	\$53 3.7%	\$53 34.8%	\$52 2.3%	\$47 10.8%	\$47 35.2%	\$43 22.1%	\$45 26.1%
● 2013	\$36 40.8%	\$33 20.9%	\$48 10.0%	\$48 -1.2%	\$54 3.2%	\$59 10.2%	\$62 15.4%	\$69 32.9%	\$46 -3.1%	\$52 11.4%	\$42 -2.9%	\$47 3.6%
+ 2014	\$35 -2.7%	\$31 -6.4%	\$38 -20.8%	\$48 0.4%	\$61 12.9%	\$67 13.6%	\$64 3.7%	\$66 -3.9%	\$61 34.4%	\$52 -1.3%	\$49 16.4%	\$54 14.8%
□ 2015	\$31 -11.6%	\$34 10.6%	\$50 31.0%	\$55 14.2%	\$64 5.0%	\$80 19.5%	\$85 33.5%	\$72 8.6%	\$73 18.4%	\$69 33.2%	\$57 15.4%	\$52 -3.7%
◇ 2016	\$38 25.4%	\$41 19.7%	\$61 22.1%	\$67 22.5%	\$81 26.6%	\$101 26.7%	\$83 -2.9%	\$80 11.7%	\$79 9.3%	\$70 0.8%	\$58 2.7%	\$63 22.7%
△ 2017	\$47 23.2%	\$41 0.0%	\$66 7.9%	\$66 -1.5%	\$81 0.7%	\$96 -4.6%	\$81 -2.2%	\$101 25.2%	\$93 17.6%	\$70 1.2%		

Values on this report are displayed in Millions

Market History Report © 2017 TREND. Compiled 11/16/2017. Information deemed reliable, but not guaranteed. Non-members contact TREND for reprint permission.

TREND • 660 American Avenue, Suite 203 • King of Prussia, PA 19406 • 1-877-330-9900 • www.trendmls.com

Berks County, PA - Single-Family - Median Settled Price

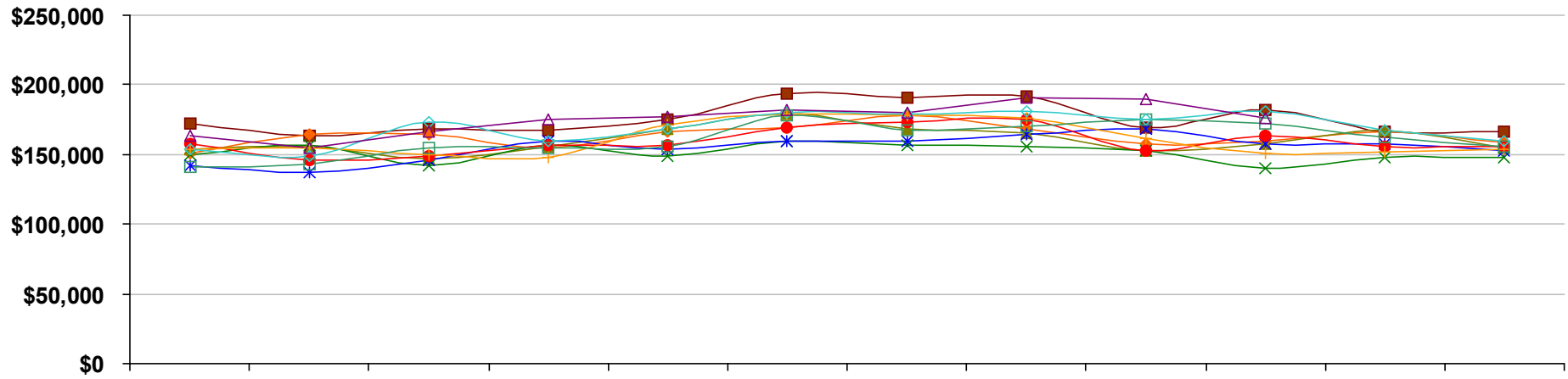


	Jan	Feb	Mar	Apr	May	Jun	Jul	Aug	Sep	Oct	Nov	Dec
■ 2008	\$160,000 -0.6%	\$152,000 0.0%	\$160,000 4.6%	\$159,000 1.3%	\$160,000 -4.2%	\$169,000 -7.7%	\$179,000 -0.6%	\$175,000 4.8%	\$160,000 -5.3%	\$165,000 1.2%	\$157,000 -6.0%	\$155,000 -1.9%
◆ 2009	\$142,000 -11.2%	\$139,000 -8.6%	\$155,000 -3.1%	\$151,000 -5.0%	\$152,000 -5.0%	\$158,000 -6.5%	\$170,000 -5.0%	\$159,000 -9.1%	\$148,000 -7.5%	\$148,000 -10.3%	\$153,000 -2.5%	\$149,000 -3.9%
▲ 2010	\$152,000 7.0%	\$139,000 0.0%	\$145,000 -6.5%	\$149,000 -1.3%	\$155,000 2.0%	\$167,000 5.7%	\$153,000 -10.0%	\$160,000 0.6%	\$147,000 -0.7%	\$154,000 4.1%	\$155,000 1.3%	\$150,000 0.7%
✕ 2011	\$149,000 -2.0%	\$135,000 -2.9%	\$139,000 -4.1%	\$147,000 -1.3%	\$135,000 -12.9%	\$149,000 -10.8%	\$150,000 -2.0%	\$141,000 -11.9%	\$149,000 1.4%	\$139,000 -9.7%	\$141,000 -9.0%	\$135,000 -10.0%
✱ 2012	\$141,000 -5.4%	\$129,000 -4.4%	\$142,000 2.2%	\$144,000 -2.0%	\$137,000 1.5%	\$158,000 6.0%	\$149,000 -0.7%	\$150,000 6.4%	\$156,000 4.7%	\$147,000 5.8%	\$147,000 4.3%	\$140,000 3.7%
● 2013	\$145,000 2.8%	\$130,000 0.8%	\$139,000 -2.1%	\$139,000 -3.5%	\$149,000 8.8%	\$154,000 -2.5%	\$158,000 6.0%	\$159,000 6.0%	\$143,000 -8.3%	\$150,000 2.0%	\$144,000 -2.0%	\$145,000 3.6%
✚ 2014	\$142,000 -2.1%	\$150,000 15.4%	\$139,000 0.0%	\$141,000 1.4%	\$148,000 -0.7%	\$160,000 3.9%	\$170,000 7.6%	\$156,000 -1.9%	\$155,000 8.4%	\$137,000 -8.7%	\$141,000 -2.1%	\$145,000 0.0%
□ 2015	\$134,000 -5.6%	\$130,000 -13.3%	\$146,000 5.0%	\$140,000 -0.7%	\$145,000 -2.0%	\$162,000 1.2%	\$158,000 -7.1%	\$158,000 1.3%	\$160,000 3.2%	\$155,000 13.1%	\$151,000 7.1%	\$136,000 -6.2%
◇ 2016	\$138,000 3.0%	\$132,000 1.5%	\$150,000 2.7%	\$149,000 6.4%	\$157,000 8.3%	\$162,000 0.0%	\$165,000 4.4%	\$165,000 4.4%	\$157,000 -1.9%	\$162,000 4.5%	\$152,000 0.7%	\$143,000 5.1%
△ 2017	\$150,000 8.7%	\$135,000 2.3%	\$154,000 2.7%	\$155,000 4.0%	\$165,000 5.1%	\$170,000 4.9%	\$172,000 4.2%	\$179,000 8.5%	\$170,000 8.3%	\$162,000 0.0%		

Market History Report © 2017 TREND. Compiled 11/16/2017. Information deemed reliable, but not guaranteed. Non-members contact TREND for reprint permission.

TREND • 660 American Avenue, Suite 203 • King of Prussia, PA 19406 • 1-877-330-9900 • www.trendmls.com

Berks County, PA - Single-Family - Average Settled Price

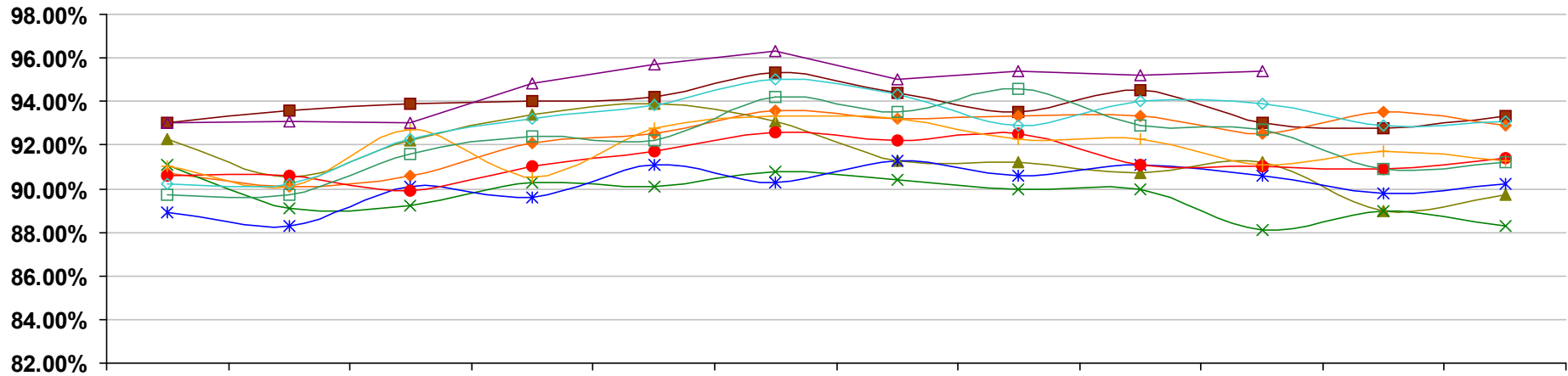


	Jan	Feb	Mar	Apr	May	Jun	Jul	Aug	Sep	Oct	Nov	Dec
■ 2008	\$172,000 -1.7%	\$163,000 -2.4%	\$168,000 -2.3%	\$167,000 1.2%	\$175,000 -3.3%	\$194,000 -0.5%	\$191,000 1.6%	\$192,000 2.7%	\$169,000 -5.1%	\$182,000 -0.5%	\$166,000 -9.3%	\$166,000 -6.7%
◆ 2009	\$151,000 -12.2%	\$164,000 0.6%	\$164,000 -2.4%	\$155,000 -7.2%	\$166,000 -5.1%	\$169,000 -12.9%	\$178,000 -6.8%	\$168,000 -12.5%	\$158,000 -6.5%	\$160,000 -12.1%	\$166,000 0.0%	\$159,000 -4.2%
▲ 2010	\$154,000 2.0%	\$156,000 -4.9%	\$147,000 -10.4%	\$156,000 0.6%	\$168,000 1.2%	\$179,000 5.9%	\$168,000 -5.6%	\$165,000 -1.8%	\$153,000 -3.2%	\$158,000 -1.2%	\$167,000 0.6%	\$155,000 -2.5%
✕ 2011	\$150,000 -2.6%	\$157,000 0.6%	\$142,000 -3.4%	\$157,000 0.6%	\$149,000 -11.3%	\$160,000 -10.6%	\$157,000 -6.5%	\$156,000 -5.5%	\$153,000 0.0%	\$140,000 -11.4%	\$148,000 -11.4%	\$148,000 -4.5%
✱ 2012	\$142,000 -5.3%	\$137,000 -12.7%	\$146,000 2.8%	\$160,000 1.9%	\$154,000 3.4%	\$160,000 0.0%	\$160,000 1.9%	\$164,000 5.1%	\$168,000 9.8%	\$158,000 12.9%	\$158,000 6.8%	\$153,000 3.4%
● 2013	\$158,000 11.3%	\$146,000 6.6%	\$149,000 2.1%	\$157,000 -1.9%	\$157,000 1.9%	\$169,000 5.6%	\$173,000 8.1%	\$175,000 6.7%	\$153,000 -8.9%	\$163,000 3.2%	\$156,000 -1.3%	\$156,000 2.0%
✚ 2014	\$154,000 -2.5%	\$155,000 6.2%	\$150,000 0.7%	\$148,000 -5.7%	\$171,000 8.9%	\$179,000 5.9%	\$178,000 2.9%	\$176,000 0.6%	\$161,000 5.2%	\$151,000 -7.4%	\$152,000 -2.6%	\$154,000 -1.3%
▣ 2015	\$141,000 -8.4%	\$143,000 -7.7%	\$155,000 3.3%	\$155,000 4.7%	\$156,000 -8.8%	\$178,000 -0.6%	\$167,000 -6.2%	\$170,000 -3.4%	\$175,000 8.7%	\$172,000 13.9%	\$162,000 6.6%	\$156,000 1.3%
◇ 2016	\$154,000 9.2%	\$149,000 4.2%	\$173,000 11.6%	\$160,000 3.2%	\$168,000 7.7%	\$180,000 1.1%	\$179,000 7.2%	\$181,000 6.5%	\$175,000 0.0%	\$181,000 5.2%	\$167,000 3.1%	\$160,000 2.6%
△ 2017	\$163,000 5.8%	\$155,000 4.0%	\$166,000 -4.0%	\$175,000 9.4%	\$177,000 5.4%	\$182,000 1.1%	\$180,000 0.6%	\$191,000 5.5%	\$190,000 8.6%	\$176,000 -2.8%		

Market History Report © 2017 TREND. Compiled 11/16/2017. Information deemed reliable, but not guaranteed. Non-members contact TREND for reprint permission.

TREND • 660 American Avenue, Suite 203 • King of Prussia, PA 19406 • 1-877-330-9900 • www.trendmls.com

Berks County, PA - Single-Family - Average Settled Price/Original Price



	Jan	Feb	Mar	Apr	May	Jun	Jul	Aug	Sep	Oct	Nov	Dec
■ 2008	93.0% -2.6%	93.6% -2.1%	93.9% -1.1%	94.0% -1.3%	94.2% -2.3%	95.3% -1.3%	94.4% -2.0%	93.5% -1.8%	94.5% -0.5%	93.0% -2.1%	92.8% -1.2%	93.3% 0.2%
◆ 2009	90.7% -2.5%	90.1% -3.7%	90.6% -3.5%	92.1% -2.0%	92.5% -1.9%	93.6% -1.7%	93.2% -1.2%	93.3% -0.2%	93.3% -1.3%	92.5% -0.5%	93.5% 0.7%	92.9% -0.4%
▲ 2010	92.3% 1.7%	90.5% 0.5%	92.2% 1.7%	93.4% 1.4%	93.9% 1.6%	93.1% -0.6%	91.3% -2.0%	91.2% -2.2%	90.7% -2.7%	91.2% -1.4%	89.0% -4.7%	89.7% -3.5%
× 2011	91.1% -1.3%	89.1% -1.6%	89.2% -3.2%	90.3% -3.4%	90.1% -4.1%	90.8% -2.5%	90.4% -1.0%	90.0% -1.4%	90.0% -0.8%	88.1% -3.5%	89.0% -0.1%	88.3% -1.6%
✱ 2012	88.9% -2.4%	88.3% -0.9%	90.1% 1.0%	89.6% -0.8%	91.1% 1.2%	90.3% -0.6%	91.3% 1.0%	90.6% 0.7%	91.1% 1.3%	90.6% 2.9%	89.8% 0.9%	90.2% 2.2%
● 2013	90.6% 1.9%	90.6% 2.6%	89.9% -0.2%	91.0% 1.5%	91.7% 0.6%	92.6% 2.6%	92.2% 1.0%	92.5% 2.0%	91.1% 0.0%	91.0% 0.4%	90.9% 1.2%	91.4% 1.4%
✚ 2014	91.0% 0.4%	90.1% -0.5%	92.7% 3.0%	90.5% -0.5%	92.8% 1.2%	93.3% 0.8%	93.2% 1.1%	92.3% -0.2%	92.3% 1.3%	91.1% 0.1%	91.7% 1.0%	91.3% -0.2%
◻ 2015	89.7% -1.4%	89.7% -0.5%	91.6% -1.1%	92.4% 2.1%	92.2% -0.6%	94.2% 1.0%	93.5% 0.3%	94.6% 2.5%	92.9% 0.7%	92.7% 1.8%	90.9% -0.9%	91.2% 0.0%
◊ 2016	90.2% 0.6%	90.2% 0.6%	92.3% 0.7%	93.2% 0.8%	93.8% 1.8%	95.0% 0.8%	94.3% 0.9%	92.9% -1.9%	94.0% 1.2%	93.9% 1.3%	92.9% 2.2%	93.1% 2.1%
△ 2017	93.0% 3.1%	93.1% 3.2%	93.0% 0.8%	94.8% 1.8%	95.7% 2.0%	96.3% 1.4%	95.0% 0.8%	95.4% 2.8%	95.2% 1.2%	95.4% 1.6%		