

MARKET HISTORY

Includes data through 5/2017

Bucks County, PA Single-Family



Market History Report

The Market History Report details current and historical statistical information for single-family listings recorded within TREND. This statistical report is organized by county and contains valuable month-over-month, year-over-year statistical information for each of the last 10 years. The Market History Report details activity in a particular market over a 10-year period – from where it's been to where it's at now. The easy-to-read month-over-month, year-over-year chart and graph enables you to clearly identify the year-over-year changes while accounting for seasonal and market trends.

Utilizing the report allows you to gain a better understanding of your market. This will give you new insights and increase your company's value when working with consumers. This powerful report is provided exclusively to TREND members.

Contents

Total Inventory	3
Inventory Accumulation	4
Pending Units	5
Settled Units	6
Total Settled Volume	7
Median Settled Price.....	8
Average Settled Price	9
Average Settled Price / Original Price.....	10

Definitions

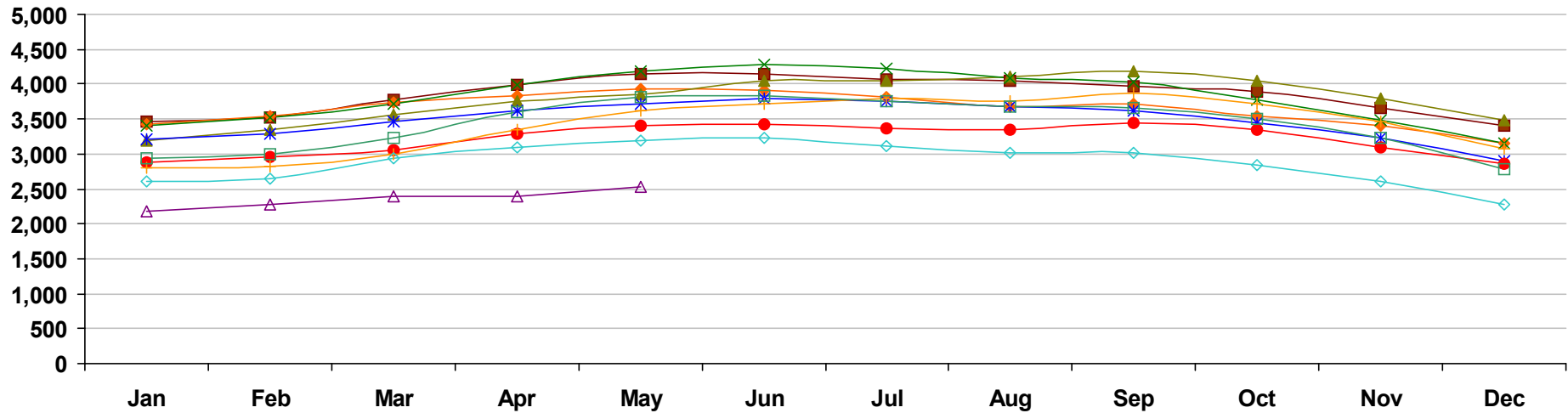
Total Inventory	The number of active single-family listings on the market on the last day of the specified month.
Inventory Accumulation	The number of months it would take to exhaust the current supply of single-family listings at the current absorption rate.
Absorption Rate	The average number of single-family listings sold in the market per month over the previous 12 months.
Pending Units	The number of single-family listings with Pending dates during the specified month.
Settled Units	The number of single-family listings with Settled dates during the specified month.
Total Settled Volume	The total dollar volume of single-family listings that have settled during the specified month.

Median Settled Price	The median price that single-family listings settled for during the specified month. Determined by arranging all Settled Listings in numerical order by price and then selecting the middle value.
Average Settled Price	The average price that single-family listings settled for during the specified month. Determined by dividing the Total Settled Volume by the number of Settled Listings.
Average Settled Price / Original Price	The average percentage of the Original Price that single-family listings settled for during the specified month. This number is determined by dividing the Settled Price by the Original Price for every listing, summing them and then dividing by the number of settled listings. TREND excludes listings if the Settled Price is greater than 150 percent or less than 50 percent of the Original Price. This ensures the percentage is more representative of listings in the market area.
Percent Change	The change in value as compared to the same month of the previous year. Indicated by +/-0.0%.

Notes on Statistics

- All statistics are from TREND's monthly Residential Activity Reports. Due to the fluid nature of MLS data, insignificant statistical variations may occur with regard to sales activity between the various TREND reports.
- Mobile homes and condominiums are excluded from these statistics.
- This report includes information on listings and transactions facilitated through TREND and does not reflect the total number of listings and transactions of a given market area.
- All monetary statistics are rounded to the nearest \$10.

Bucks County, PA - Single-Family - Total Inventory

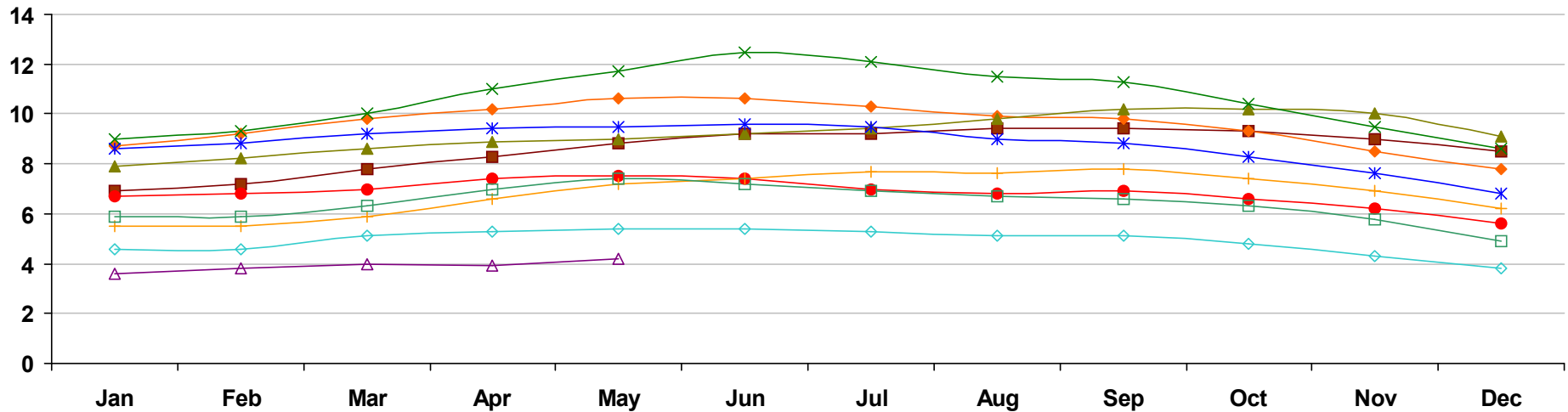


	Jan	Feb	Mar	Apr	May	Jun	Jul	Aug	Sep	Oct	Nov	Dec
■ 2008	3,460 11.1%	3,523 14.9%	3,770 15.0%	3,987 11.7%	4,138 10.6%	4,144 8.1%	4,067 6.7%	4,037 5.4%	3,967 -0.8%	3,888 -1.1%	3,652 -0.3%	3,403 1.5%
◆ 2009	3,423 -1.1%	3,544 0.6%	3,737 -0.9%	3,832 -3.9%	3,924 -5.2%	3,907 -5.7%	3,810 -6.3%	3,685 -8.7%	3,709 -6.5%	3,543 -8.9%	3,395 -7.0%	3,143 -7.6%
▲ 2010	3,200 -6.5%	3,342 -5.7%	3,552 -5.0%	3,755 -2.0%	3,861 -1.6%	4,051 3.7%	4,042 6.1%	4,096 11.2%	4,184 12.8%	4,045 14.2%	3,793 11.7%	3,474 10.5%
✕ 2011	3,413 6.7%	3,516 5.2%	3,725 4.9%	3,982 6.0%	4,184 8.4%	4,287 5.8%	4,229 4.6%	4,083 -0.3%	4,019 -3.9%	3,771 -6.8%	3,489 -8.0%	3,158 -9.1%
✱ 2012	3,210 -5.9%	3,289 -6.5%	3,462 -7.1%	3,617 -9.2%	3,714 -11.2%	3,795 -11.5%	3,762 -11.0%	3,671 -10.1%	3,613 -10.1%	3,438 -8.8%	3,223 -7.6%	2,907 -7.9%
● 2013	2,881 -10.2%	2,957 -10.1%	3,049 -11.9%	3,280 -9.3%	3,404 -8.3%	3,421 -9.9%	3,368 -10.5%	3,346 -8.9%	3,440 -4.8%	3,344 -2.7%	3,100 -3.8%	2,860 -1.6%
✚ 2014	2,804 -2.7%	2,820 -4.6%	2,990 -1.9%	3,343 1.9%	3,628 6.6%	3,715 8.6%	3,790 12.5%	3,754 12.2%	3,863 12.3%	3,725 11.4%	3,463 11.7%	3,072 7.4%
□ 2015	2,943 5.0%	2,999 6.3%	3,223 7.8%	3,605 7.8%	3,821 5.3%	3,823 2.9%	3,746 -1.2%	3,679 -2.0%	3,649 -5.5%	3,501 -6.0%	3,232 -6.7%	2,787 -9.3%
◇ 2016	2,609 -11.3%	2,640 -12.0%	2,939 -8.8%	3,084 -14.5%	3,196 -16.4%	3,227 -15.6%	3,107 -17.1%	3,020 -17.9%	3,017 -17.3%	2,834 -19.1%	2,598 -19.6%	2,269 -18.6%
△ 2017	2,178 -16.5%	2,273 -13.9%	2,388 -18.7%	2,386 -22.6%	2,533 -20.7%							

Market History Report © 2017 TREND. Compiled 6/11/2017. Information deemed reliable, but not guaranteed. Non-members contact TREND for reprint permission.

TREND • 660 American Avenue, Suite 203 • King of Prussia, PA 19406 • 1-877-330-9900 • www.trendmls.com

Bucks County, PA - Single-Family - Inventory Accumulation

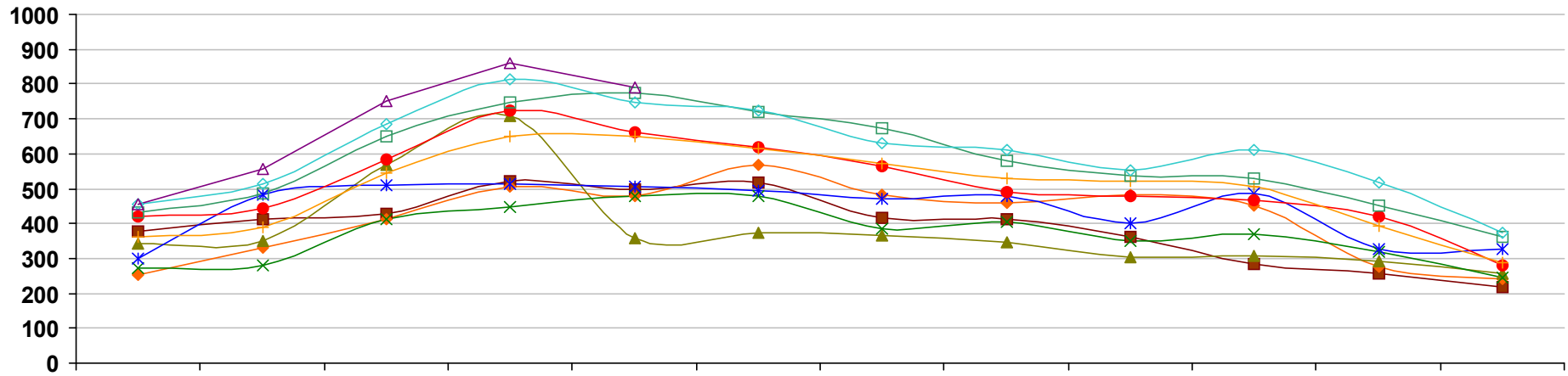


	Jan	Feb	Mar	Apr	May	Jun	Jul	Aug	Sep	Oct	Nov	Dec
2008	6.9 16.9%	7.2 24.1%	7.8 27.9%	8.3 23.9%	8.8 22.2%	9.2 24.3%	9.2 26.0%	9.4 28.8%	9.4 22.1%	9.3 22.4%	9.0 26.8%	8.5 28.8%
2009	8.7 26.1%	9.2 27.8%	9.8 25.6%	10.2 22.9%	10.6 20.5%	10.6 15.2%	10.3 12.0%	9.9 5.3%	9.8 4.3%	9.3 0.0%	8.5 -5.6%	7.8 -8.2%
2010	7.9 -9.2%	8.2 -10.9%	8.6 -12.2%	8.9 -12.7%	9.0 -15.1%	9.2 -13.2%	9.4 -8.7%	9.8 -1.0%	10.2 4.1%	10.2 9.7%	10.0 17.6%	9.1 16.7%
2011	9.0 13.9%	9.3 13.4%	10.0 16.3%	11.0 23.6%	11.7 30.0%	12.5 35.9%	12.1 28.7%	11.5 17.3%	11.3 10.8%	10.4 2.0%	9.5 -5.0%	8.6 -5.5%
2012	8.6 -4.4%	8.8 -5.4%	9.2 -8.0%	9.4 -14.5%	9.5 -18.8%	9.6 -23.2%	9.5 -21.5%	9.0 -21.7%	8.8 -22.1%	8.3 -20.2%	7.6 -20.0%	6.8 -20.9%
2013	6.7 -22.1%	6.8 -22.7%	7.0 -23.9%	7.4 -21.3%	7.5 -21.1%	7.4 -22.9%	7.0 -26.3%	6.8 -24.4%	6.9 -21.6%	6.6 -20.5%	6.2 -18.4%	5.6 -17.6%
2014	5.5 -17.9%	5.5 -19.1%	5.9 -15.7%	6.6 -10.8%	7.2 -4.0%	7.4 0.0%	7.7 10.0%	7.6 11.8%	7.8 13.0%	7.4 12.1%	6.9 11.3%	6.2 10.7%
2015	5.9 7.3%	5.9 7.3%	6.3 6.8%	7.0 6.1%	7.4 2.8%	7.2 -2.7%	6.9 -10.4%	6.7 -11.8%	6.6 -15.4%	6.3 -14.9%	5.8 -15.9%	4.9 -21.0%
2016	4.6 -22.0%	4.6 -22.0%	5.1 -19.0%	5.3 -24.3%	5.4 -27.0%	5.4 -25.0%	5.3 -23.2%	5.1 -23.9%	5.1 -22.7%	4.8 -23.8%	4.3 -25.9%	3.8 -22.4%
2017	3.6 -21.7%	3.8 -17.4%	4.0 -21.6%	3.9 -26.4%	4.2 -22.2%							

Market History Report © 2017 TREND. Compiled 6/11/2017. Information deemed reliable, but not guaranteed. Non-members contact TREND for reprint permission.

TREND • 660 American Avenue, Suite 203 • King of Prussia, PA 19406 • 1-877-330-9900 • www.trendmls.com

Bucks County, PA - Single-Family - Pending Units

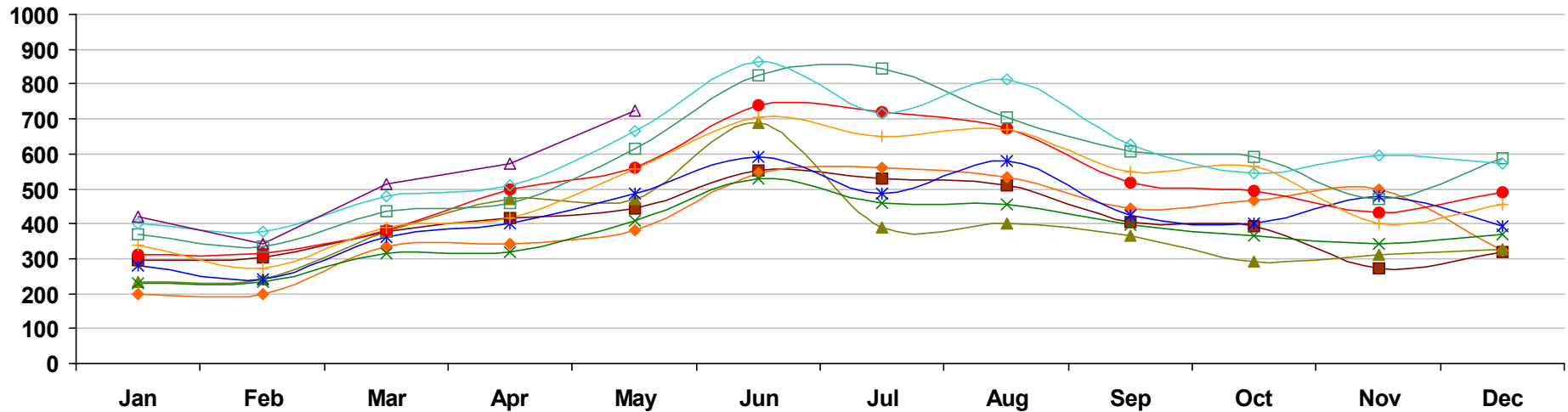


	Jan	Feb	Mar	Apr	May	Jun	Jul	Aug	Sep	Oct	Nov	Dec
■ 2008	379 -22.8%	414 -22.9%	427 -30.0%	523 -11.4%	497 -21.2%	516 -14.4%	418 -22.4%	413 -12.5%	360 -5.0%	284 -36.7%	258 -34.8%	218 -12.4%
◆ 2009	254 -33.0%	329 -20.5%	413 -3.3%	505 -3.4%	477 -4.0%	567 9.9%	482 15.3%	459 11.1%	481 33.6%	450 58.5%	277 7.4%	240 10.1%
▲ 2010	343 35.0%	350 6.4%	570 38.0%	707 40.0%	357 -25.2%	373 -34.2%	364 -24.5%	348 -24.2%	302 -37.2%	306 -32.0%	291 5.1%	256 6.7%
✕ 2011	273 -20.4%	281 -19.7%	414 -27.4%	448 -36.6%	480 34.5%	480 28.7%	384 5.5%	406 16.7%	350 15.9%	371 21.2%	321 10.3%	244 -4.7%
✱ 2012	298 9.2%	483 71.9%	508 22.7%	512 14.3%	504 5.0%	495 3.1%	469 22.1%	477 17.5%	399 14.0%	486 31.0%	327 1.9%	328 34.4%
● 2013	421 41.3%	444 -8.1%	582 14.6%	723 41.2%	660 31.0%	620 25.3%	563 20.0%	489 2.5%	479 20.1%	466 -4.1%	419 28.1%	279 -14.9%
✚ 2014	360 -14.5%	388 -12.6%	545 -6.4%	650 -10.1%	650 -1.5%	613 -1.1%	571 1.4%	530 8.4%	522 9.0%	505 8.4%	394 -6.0%	287 2.9%
◻ 2015	433 20.3%	487 25.5%	650 19.3%	746 14.8%	775 19.2%	719 17.3%	672 17.7%	580 9.4%	538 3.1%	530 5.0%	453 15.0%	363 26.5%
◇ 2016	455 5.1%	515 5.7%	683 5.1%	814 9.1%	747 -3.6%	725 0.8%	630 -6.2%	609 5.0%	552 2.6%	610 15.1%	516 13.9%	372 2.5%
△ 2017	457 0.4%	558 8.3%	750 9.8%	861 5.8%	791 5.9%							

Market History Report © 2017 TREND. Compiled 6/11/2017. Information deemed reliable, but not guaranteed. Non-members contact TREND for reprint permission.

TREND • 660 American Avenue, Suite 203 • King of Prussia, PA 19406 • 1-877-330-9900 • www.trendmls.com

Bucks County, PA - Single-Family - Settled Units

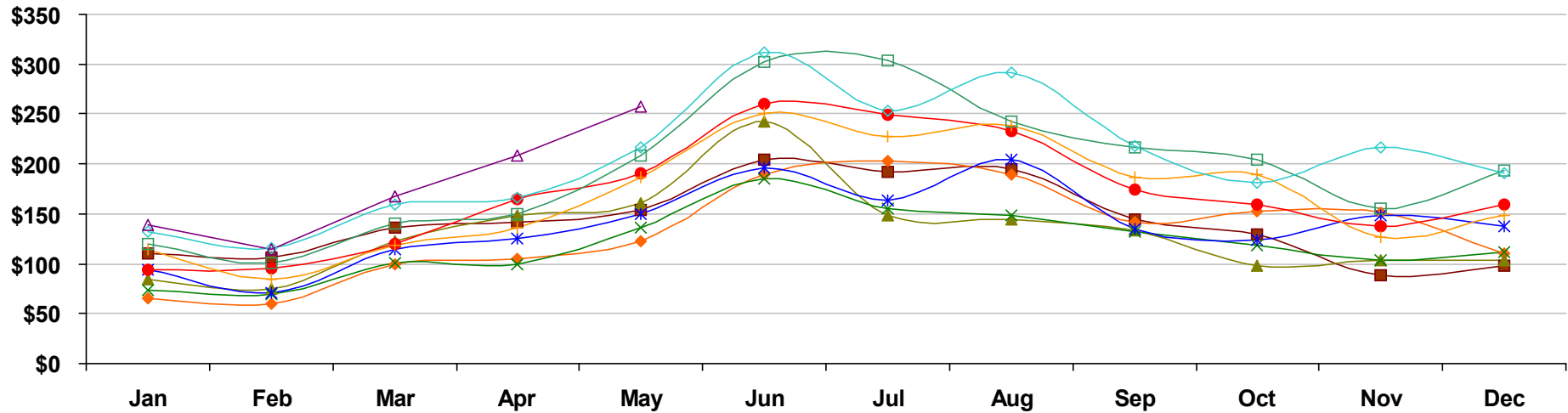


	Jan	Feb	Mar	Apr	May	Jun	Jul	Aug	Sep	Oct	Nov	Dec
■ 2008	295 -18.1%	302 -22.0%	377 -24.1%	416 -8.4%	443 -23.1%	551 -25.1%	529 -19.7%	510 -23.3%	403 -13.0%	393 -13.1%	272 -40.0%	320 -10.1%
◆ 2009	199 -32.5%	199 -34.1%	333 -11.7%	344 -17.3%	383 -13.5%	543 -1.5%	560 5.9%	534 4.7%	443 9.9%	466 18.6%	497 82.7%	324 1.2%
▲ 2010	235 18.1%	240 20.6%	376 12.9%	470 36.6%	470 22.7%	688 26.7%	391 -30.2%	399 -25.3%	365 -17.6%	291 -37.6%	311 -37.4%	327 0.9%
✕ 2011	231 -1.7%	234 -2.5%	315 -16.2%	320 -31.9%	408 -13.2%	530 -23.0%	458 17.1%	457 14.5%	398 9.0%	366 25.8%	342 10.0%	369 12.8%
✱ 2012	279 20.8%	240 2.6%	363 15.2%	400 25.0%	487 19.4%	590 11.3%	486 6.1%	580 26.9%	425 6.8%	401 9.6%	478 39.8%	392 6.2%
● 2013	311 11.5%	316 31.7%	383 5.5%	499 24.8%	560 15.0%	738 25.1%	719 47.9%	674 16.2%	519 22.1%	494 23.2%	430 -10.0%	491 25.3%
+ 2014	340 9.3%	272 -13.9%	389 1.6%	418 -16.2%	556 -0.7%	704 -4.6%	651 -9.5%	669 -0.7%	548 5.6%	566 14.6%	400 -7.0%	456 -7.1%
□ 2015	368 8.2%	334 22.8%	437 12.3%	460 10.0%	615 10.6%	824 17.0%	846 30.0%	706 5.5%	606 10.6%	592 4.6%	469 17.2%	588 28.9%
◇ 2016	400 8.7%	379 13.5%	480 9.8%	509 10.7%	666 8.3%	865 5.0%	715 -15.5%	814 15.3%	627 3.5%	543 -8.3%	596 27.1%	573 -2.6%
△ 2017	419 4.8%	343 -9.5%	515 7.3%	571 12.2%	725 8.9%							

Market History Report © 2017 TREND. Compiled 6/11/2017. Information deemed reliable, but not guaranteed. Non-members contact TREND for reprint permission.

TREND • 660 American Avenue, Suite 203 • King of Prussia, PA 19406 • 1-877-330-9900 • www.trendmls.com

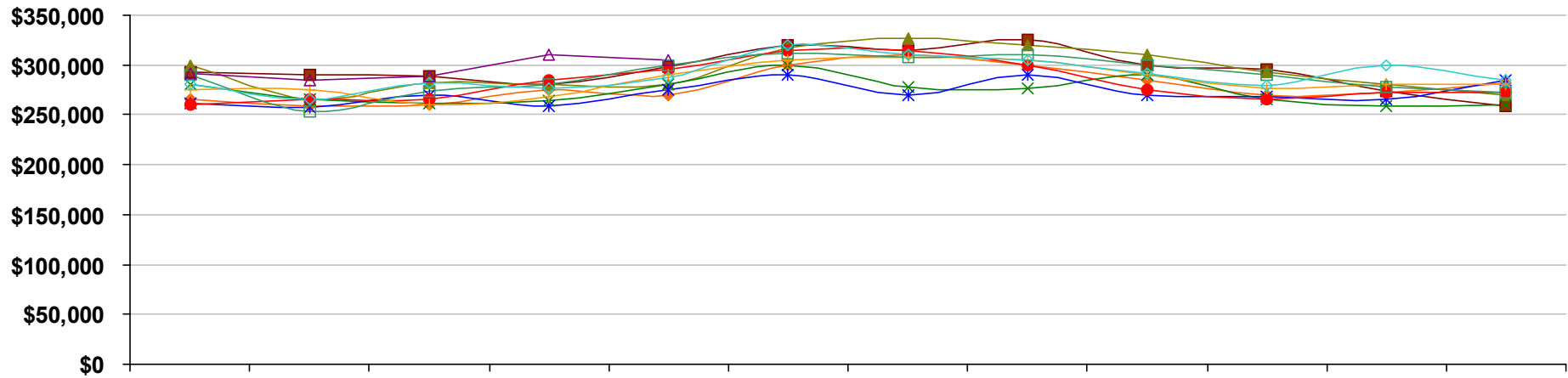
Bucks County, PA - Single-Family - Total Settled Volume



	Jan	Feb	Mar	Apr	May	Jun	Jul	Aug	Sep	Oct	Nov	Dec
■ 2008	\$110 -17.3%	\$106 -20.0%	\$136 -23.2%	\$142 -16.7%	\$154 -30.1%	\$204 -28.7%	\$192 -28.9%	\$195 -25.0%	\$144 -19.1%	\$130 -17.5%	\$88 -48.4%	\$98 -27.6%
◆ 2009	\$66 -40.1%	\$60 -42.8%	\$99 -27.2%	\$105 -26.4%	\$123 -20.3%	\$189 -7.1%	\$203 5.6%	\$189 -2.6%	\$141 -1.8%	\$152 16.4%	\$151 71.8%	\$110 11.9%
▲ 2010	\$85 28.6%	\$75 24.1%	\$123 24.0%	\$148 41.5%	\$161 30.9%	\$243 28.4%	\$149 -26.8%	\$144 -23.9%	\$133 -5.6%	\$98 -35.5%	\$103 -31.8%	\$103 -6.2%
✕ 2011	\$74 -13.1%	\$69 -7.6%	\$101 -18.3%	\$100 -32.3%	\$136 -15.6%	\$185 -24.1%	\$155 4.1%	\$149 3.5%	\$132 -1.2%	\$119 21.5%	\$104 1.5%	\$112 8.9%
✱ 2012	\$94 26.6%	\$71 2.1%	\$114 13.5%	\$125 24.7%	\$150 10.2%	\$196 6.0%	\$163 5.5%	\$204 36.7%	\$135 2.7%	\$124 4.0%	\$149 42.6%	\$137 22.2%
● 2013	\$94 0.5%	\$96 36.4%	\$120 5.0%	\$165 32.0%	\$191 27.2%	\$260 32.8%	\$249 52.6%	\$233 14.3%	\$175 29.0%	\$159 29.0%	\$137 -7.6%	\$159 15.8%
+ 2014	\$115 21.9%	\$85 -11.8%	\$118 -1.5%	\$136 -17.4%	\$187 -2.1%	\$251 -3.4%	\$227 -8.8%	\$239 2.5%	\$187 7.3%	\$189 18.3%	\$127 -7.6%	\$148 -6.5%
□ 2015	\$120 5.0%	\$101 19.1%	\$140 18.4%	\$150 10.0%	\$209 11.8%	\$303 20.7%	\$304 33.9%	\$243 1.4%	\$216 15.4%	\$204 8.3%	\$155 22.4%	\$193 30.2%
◇ 2016	\$132 9.8%	\$116 14.5%	\$159 13.4%	\$166 10.6%	\$217 4.0%	\$312 3.0%	\$253 -16.8%	\$292 20.3%	\$218 1.0%	\$181 -11.5%	\$216 38.9%	\$190 -1.3%
△ 2017	\$139 5.5%	\$114 -1.3%	\$167 4.9%	\$209 25.8%	\$257 18.4%							

Values on this report are displayed in Millions

Bucks County, PA - Single-Family - Median Settled Price

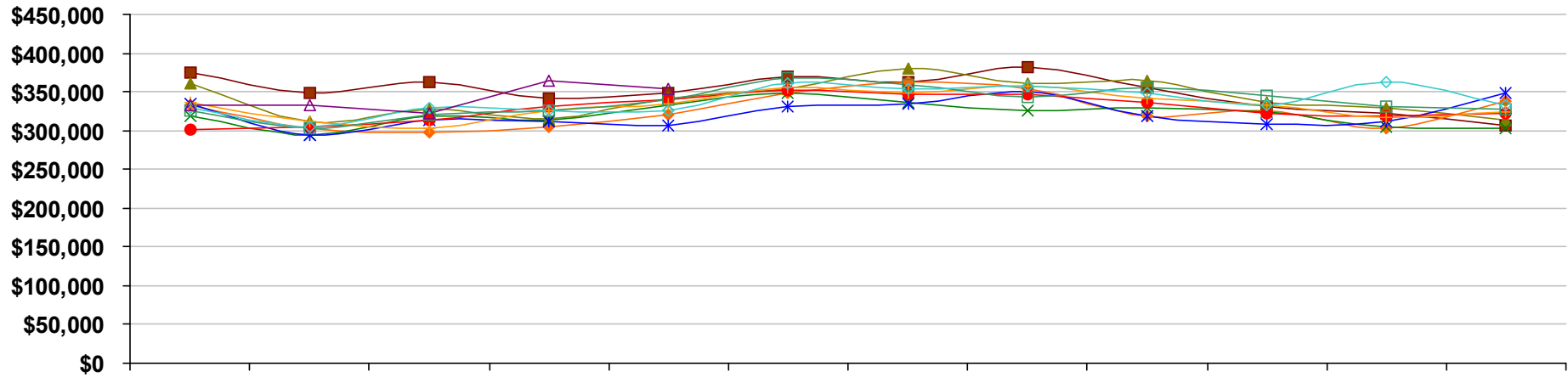


	Jan	Feb	Mar	Apr	May	Jun	Jul	Aug	Sep	Oct	Nov	Dec
■ 2008	\$293,000 -0.3%	\$290,000 -3.0%	\$289,000 -3.3%	\$280,000 -8.2%	\$298,000 -9.4%	\$320,000 -2.7%	\$315,000 -7.4%	\$325,000 -1.2%	\$300,000 -6.2%	\$295,000 -1.0%	\$274,000 -10.2%	\$259,000 -16.5%
◆ 2009	\$265,000 -9.6%	\$259,000 -10.7%	\$260,000 -10.0%	\$275,000 -1.8%	\$270,000 -9.4%	\$300,000 -6.2%	\$310,000 -1.6%	\$300,000 -7.7%	\$284,000 -5.3%	\$270,000 -8.5%	\$272,000 -0.7%	\$282,000 8.9%
▲ 2010	\$300,000 13.2%	\$265,000 2.3%	\$282,000 8.5%	\$280,000 1.8%	\$280,000 3.7%	\$317,000 5.7%	\$327,000 5.5%	\$320,000 6.7%	\$310,000 9.2%	\$293,000 8.5%	\$280,000 2.9%	\$269,000 -4.6%
✕ 2011	\$280,000 -6.7%	\$265,000 0.0%	\$262,000 -7.1%	\$264,000 -5.7%	\$280,000 0.0%	\$300,000 -5.4%	\$278,000 -15.0%	\$276,000 -13.8%	\$290,000 -6.5%	\$265,000 -9.6%	\$259,000 -7.5%	\$260,000 -3.3%
✱ 2012	\$262,000 -6.4%	\$258,000 -2.6%	\$270,000 3.1%	\$259,000 -1.9%	\$275,000 -1.8%	\$290,000 -3.3%	\$270,000 -2.9%	\$290,000 5.1%	\$270,000 -6.9%	\$268,000 1.1%	\$265,000 2.3%	\$285,000 9.6%
● 2013	\$260,000 -0.8%	\$265,000 2.7%	\$265,000 -1.9%	\$285,000 10.0%	\$295,000 7.3%	\$315,000 8.6%	\$315,000 16.7%	\$300,000 3.4%	\$275,000 1.9%	\$265,000 -1.1%	\$273,000 3.0%	\$273,000 -4.2%
✚ 2014	\$275,000 5.8%	\$275,000 3.8%	\$260,000 -1.9%	\$268,000 -6.0%	\$290,000 -1.7%	\$305,000 -3.2%	\$308,000 -2.2%	\$305,000 1.7%	\$290,000 5.5%	\$276,000 4.2%	\$280,000 2.6%	\$280,000 2.6%
□ 2015	\$290,000 5.5%	\$253,000 -8.0%	\$274,000 5.4%	\$281,000 4.9%	\$299,000 3.1%	\$312,000 2.3%	\$308,000 0.0%	\$310,000 1.6%	\$299,000 3.1%	\$290,000 5.1%	\$278,000 -0.7%	\$272,000 -2.9%
◇ 2016	\$280,000 -3.4%	\$265,000 4.7%	\$282,000 2.9%	\$277,000 -1.4%	\$288,000 -3.7%	\$320,000 2.6%	\$310,000 0.6%	\$305,000 -1.6%	\$291,000 -2.7%	\$279,000 -3.8%	\$299,000 7.6%	\$285,000 4.8%
△ 2017	\$292,000 4.3%	\$285,000 7.5%	\$289,000 2.5%	\$311,000 12.3%	\$305,000 5.9%							

Market History Report © 2017 TREND. Compiled 6/11/2017. Information deemed reliable, but not guaranteed. Non-members contact TREND for reprint permission.

TREND • 660 American Avenue, Suite 203 • King of Prussia, PA 19406 • 1-877-330-9900 • www.trendmls.com

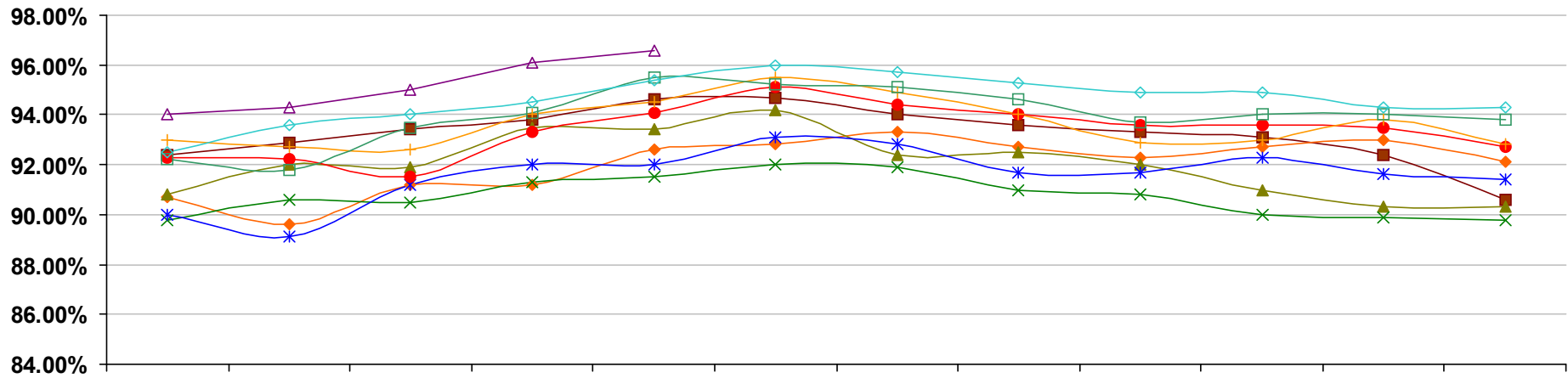
Bucks County, PA - Single-Family - Average Settled Price



	Jan	Feb	Mar	Apr	May	Jun	Jul	Aug	Sep	Oct	Nov	Dec
■ 2008	\$374,000 1.1%	\$349,000 2.6%	\$362,000 1.4%	\$342,000 -9.0%	\$348,000 -9.1%	\$369,000 -4.9%	\$363,000 -11.5%	\$381,000 -2.1%	\$356,000 -7.3%	\$331,000 -5.2%	\$322,000 -14.1%	\$306,000 -19.3%
◆ 2009	\$332,000 -11.2%	\$303,000 -13.2%	\$298,000 -17.7%	\$304,000 -11.1%	\$321,000 -7.8%	\$348,000 -5.7%	\$362,000 -0.3%	\$354,000 -7.1%	\$318,000 -10.7%	\$325,000 -1.8%	\$303,000 -5.9%	\$338,000 10.5%
▲ 2010	\$361,000 8.7%	\$312,000 3.0%	\$327,000 9.7%	\$315,000 3.6%	\$342,000 6.5%	\$353,000 1.4%	\$380,000 5.0%	\$361,000 2.0%	\$365,000 14.8%	\$336,000 3.4%	\$330,000 8.9%	\$314,000 -7.1%
✕ 2011	\$319,000 -11.6%	\$295,000 -5.4%	\$319,000 -2.4%	\$313,000 -0.6%	\$333,000 -2.6%	\$348,000 -1.4%	\$337,000 -11.3%	\$326,000 -9.7%	\$330,000 -9.6%	\$324,000 -3.6%	\$305,000 -7.6%	\$303,000 -3.5%
✱ 2012	\$335,000 5.0%	\$294,000 -0.3%	\$314,000 -1.6%	\$312,000 -0.3%	\$307,000 -7.8%	\$331,000 -4.9%	\$335,000 -0.6%	\$351,000 7.7%	\$318,000 -3.6%	\$308,000 -4.9%	\$311,000 2.0%	\$349,000 15.2%
● 2013	\$302,000 -9.9%	\$304,000 3.4%	\$313,000 -0.3%	\$331,000 6.1%	\$340,000 10.7%	\$352,000 6.3%	\$346,000 3.3%	\$346,000 -1.4%	\$336,000 5.7%	\$322,000 4.5%	\$319,000 2.6%	\$322,000 -7.7%
✚ 2014	\$336,000 11.3%	\$312,000 2.6%	\$303,000 -3.2%	\$326,000 -1.5%	\$335,000 -1.5%	\$356,000 1.1%	\$348,000 0.6%	\$357,000 3.2%	\$341,000 1.5%	\$333,000 3.4%	\$317,000 -0.6%	\$324,000 0.6%
□ 2015	\$326,000 -3.0%	\$303,000 -2.9%	\$320,000 5.6%	\$326,000 0.0%	\$339,000 1.2%	\$367,000 3.1%	\$359,000 3.2%	\$343,000 -3.9%	\$356,000 4.4%	\$345,000 3.6%	\$331,000 4.4%	\$328,000 1.2%
◇ 2016	\$330,000 1.2%	\$305,000 0.7%	\$330,000 3.1%	\$326,000 0.0%	\$325,000 -4.1%	\$361,000 -1.6%	\$353,000 -1.7%	\$358,000 4.4%	\$348,000 -2.2%	\$333,000 -3.5%	\$362,000 9.4%	\$332,000 1.2%
△ 2017	\$332,000 0.6%	\$333,000 9.2%	\$323,000 -2.1%	\$365,000 12.0%	\$354,000 8.9%							

Market History Report © 2017 TREND. Compiled 6/11/2017. Information deemed reliable, but not guaranteed. Non-members contact TREND for reprint permission.

Bucks County, PA - Single-Family - Average Settled Price/Original Price



	Jan	Feb	Mar	Apr	May	Jun	Jul	Aug	Sep	Oct	Nov	Dec
■ 2008	92.4% -1.9%	92.9% -1.5%	93.4% -1.8%	93.8% -1.7%	94.6% -1.0%	94.7% -1.7%	94.0% -1.6%	93.6% -1.9%	93.3% -1.4%	93.1% -1.1%	92.4% -1.5%	90.6% -3.1%
◆ 2009	90.7% -1.8%	89.6% -3.5%	91.2% -2.3%	91.2% -2.8%	92.6% -2.1%	92.8% -2.0%	93.3% -0.7%	92.7% -1.0%	92.3% -1.0%	92.7% -0.4%	93.0% 0.7%	92.1% 1.7%
▲ 2010	90.8% 0.1%	92.0% 2.6%	91.9% 0.7%	93.5% 2.4%	93.4% 0.9%	94.2% 1.5%	92.4% -0.9%	92.5% -0.2%	92.0% -0.3%	91.0% -1.9%	90.3% -2.9%	90.3% -1.9%
× 2011	89.8% -1.1%	90.6% -1.5%	90.5% -1.5%	91.3% -2.3%	91.5% -2.1%	92.0% -2.3%	91.9% -0.6%	91.0% -1.6%	90.8% -1.4%	90.0% -1.1%	89.9% -0.5%	89.8% -0.6%
✱ 2012	90.0% 0.2%	89.1% -1.6%	91.2% 0.8%	92.0% 0.7%	92.0% 0.5%	93.1% 1.2%	92.8% 1.0%	91.7% 0.7%	91.7% 1.0%	92.3% 2.5%	91.6% 1.8%	91.4% 1.9%
● 2013	92.3% 2.6%	92.2% 3.5%	91.5% 0.3%	93.3% 1.4%	94.1% 2.3%	95.1% 2.2%	94.4% 1.8%	94.0% 2.5%	93.6% 2.1%	93.6% 1.4%	93.5% 2.1%	92.7% 1.4%
+ 2014	93.0% 0.8%	92.7% 0.5%	92.6% 1.2%	94.0% 0.7%	94.5% 0.5%	95.5% 0.4%	94.9% 0.5%	94.0% 0.1%	92.9% -0.7%	93.0% -0.6%	93.8% 0.4%	92.8% 0.1%
□ 2015	92.2% -0.9%	91.8% -0.9%	93.5% 1.0%	94.1% 0.2%	95.5% 1.1%	95.2% -0.3%	95.1% 0.2%	94.6% 0.6%	93.7% 0.8%	94.0% 1.1%	94.0% 0.2%	93.8% 1.1%
◇ 2016	92.5% 0.4%	93.6% 1.9%	94.0% 0.5%	94.5% 0.4%	95.4% -0.2%	96.0% 0.8%	95.7% 0.6%	95.3% 0.7%	94.9% 1.3%	94.9% 1.0%	94.3% 0.4%	94.3% 0.5%
△ 2017	94.0% 1.6%	94.3% 0.8%	95.0% 1.1%	96.1% 1.7%	96.6% 1.2%							