

MARKET HISTORY

Includes data through 8/2018

Schuylkill County, PA
Condo



Market History Report

The Market History Report details current and historical statistical information for condominium listings recorded within TREND. This statistical report is organized by county and contains valuable month-over-month, year-over-year statistical information for each of the last 10 years. The Market History Report details activity in a particular market over a 10-year period – from where it's been to where it's at now. The easy-to-read month-over-month, year-over-year chart and graph enables you to clearly identify the year-over-year changes while accounting for seasonal and market trends.

Utilizing the report allows you to gain a better understanding of your market. This will give you new insights and increase your company's value when working with consumers. This powerful report is provided exclusively to TREND members.

Contents

Total Inventory	3
Inventory Accumulation	4
Pending Units	5
Settled Units	6
Total Settled Volume	7
Median Settled Price	8
Average Settled Price	9
Average Settled Price / Original Price.....	10

Definitions

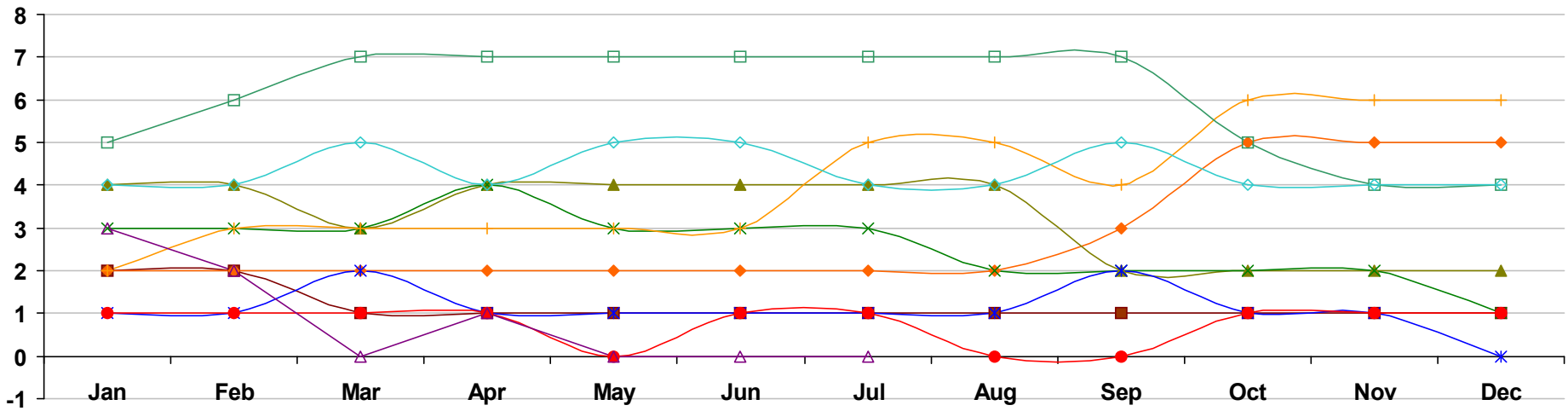
Total Inventory	The number of active condominium listings on the market on the last day of the specified month.
Inventory Accumulation	The number of months it would take to exhaust the current supply of condominium listings at the current absorption rate.
Absorption Rate	The average number of condominium listings sold in the market per month over the previous 12 months.
Pending Units	The number of condominium listings with Pending dates during the specified month.
Settled Units	The number of condominium listings with Settled dates during the specified month.
Total Settled Volume	The total dollar volume of condominium listings that have settled during the specified month.

Median Settled Price	The median price that condominium listings settled for during the specified month. Determined by arranging all Settled Listings in numerical order by price and then selecting the middle value.
Average Settled Price	The average price that condominium listings settled for during the specified month. Determined by dividing the Total Settled Volume by the number of Settled Listings.
Average Settled Price / Original Price	The average percentage of the Original Price that condominium listings settled for during the specified month. This number is determined by dividing the Settled Price by the Original Price for every listing, summing them and then dividing by the number of settled listings. TREND excludes listings if the Settled Price is greater than 150 percent or less than 50 percent of the Original Price. This ensures the percentage is more representative of listings in the market area.
Percent Change	The change in value as compared to the same month of the previous year. Indicated by +/-0.0%.

Notes on Statistics

- All statistics are from TREND's monthly Residential Activity Reports. Due to the fluid nature of MLS data, insignificant statistical variations may occur with regard to sales activity between the various TREND reports.
- Mobile homes and single-family homes are excluded from these statistics.
- This report includes information on listings and transactions facilitated through TREND and does not reflect the total number of listings and transactions of a given market area.
- All monetary statistics are rounded to the nearest \$10.

Schuylkill County, PA - Condo - Total Inventory

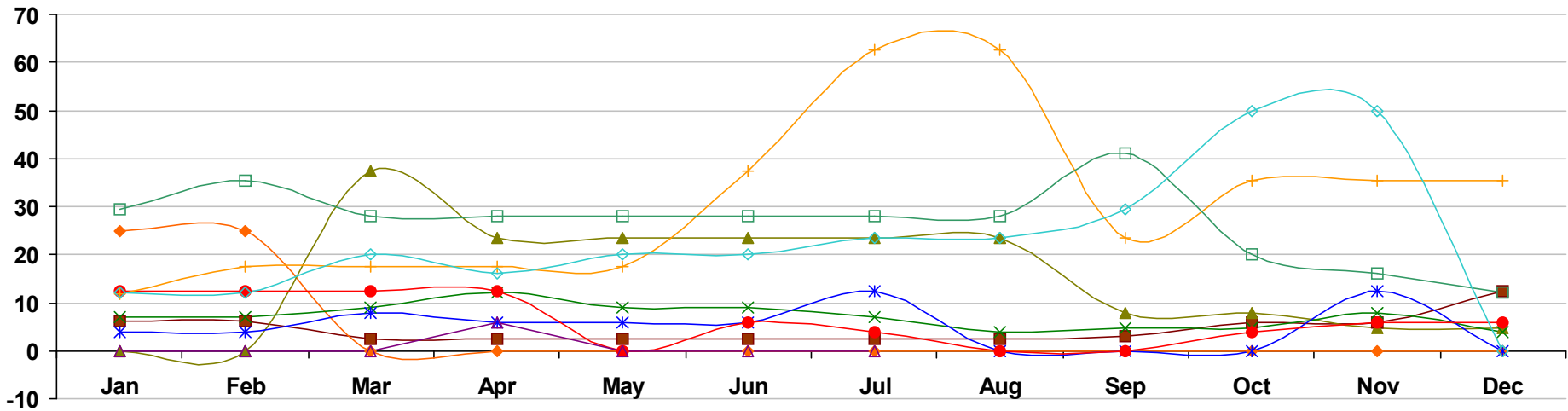


■ 2009	2	2	1	1	1	1	1	1	1	1	1	1	1
	100.0%	100.0%	0.0%	-50.0%	-50.0%	-50.0%	-50.0%	-50.0%	-75.0%	-75.0%	-50.0%	-50.0%	-50.0%
◆ 2010	2	2	2	2	2	2	2	2	2	3	5	5	5
	0.0%	0.0%	100.0%	100.0%	100.0%	100.0%	100.0%	100.0%	100.0%	200.0%	400.0%	400.0%	400.0%
▲ 2011	4	4	3	4	4	4	4	4	4	2	2	2	2
	100.0%	100.0%	50.0%	100.0%	100.0%	100.0%	100.0%	100.0%	100.0%	-33.3%	-60.0%	-60.0%	-60.0%
✕ 2012	3	3	3	4	3	3	3	3	2	2	2	2	1
	-25.0%	-25.0%	0.0%	0.0%	-25.0%	-25.0%	-25.0%	-25.0%	-50.0%	0.0%	0.0%	0.0%	-50.0%
✱ 2013	1	1	2	1	1	1	1	1	1	2	1	1	0
	-66.7%	-66.7%	-33.3%	-75.0%	-66.7%	-66.7%	-66.7%	-66.7%	-50.0%	0.0%	-50.0%	-50.0%	-100.0%
● 2014	1	1	1	1	0	1	1	1	0	0	1	1	1
	0.0%	0.0%	-50.0%	0.0%	-100.0%	0.0%	0.0%	0.0%	-100.0%	-100.0%	0.0%	0.0%	100.0%
+ 2015	2	3	3	3	3	3	5	5	4	6	6	6	6
	100.0%	200.0%	200.0%	200.0%	100.0%	200.0%	400.0%	100.0%	100.0%	500.0%	500.0%	500.0%	500.0%
□ 2016	5	6	7	7	7	7	7	7	7	5	4	4	4
	150.0%	100.0%	133.3%	133.3%	133.3%	133.3%	40.0%	40.0%	75.0%	-16.7%	-33.3%	-33.3%	-33.3%
◇ 2017	4	4	5	4	5	5	4	4	5	4	4	4	4
	-20.0%	-33.3%	-28.6%	-42.9%	-28.6%	-28.6%	-42.9%	-42.9%	-28.6%	-20.0%	0.0%	0.0%	0.0%
△ 2018	3	2	0	1	0	0	0	0	0	0	0	0	0
	-25.0%	-50.0%	-100.0%	-75.0%	-100.0%	-100.0%	-100.0%	-100.0%	-100.0%	-100.0%	-100.0%	-100.0%	-100.0%

Market History Report © 2018 TREND. Compiled 9/17/2018. Information deemed reliable, but not guaranteed. Non-members contact TREND for reprint permission.

TREND • 660 American Avenue, Suite 203 • King of Prussia, PA 19406 • 1-877-330-9900 • www.trendmls.com

Schuylkill County, PA - Condo - Inventory Accumulation

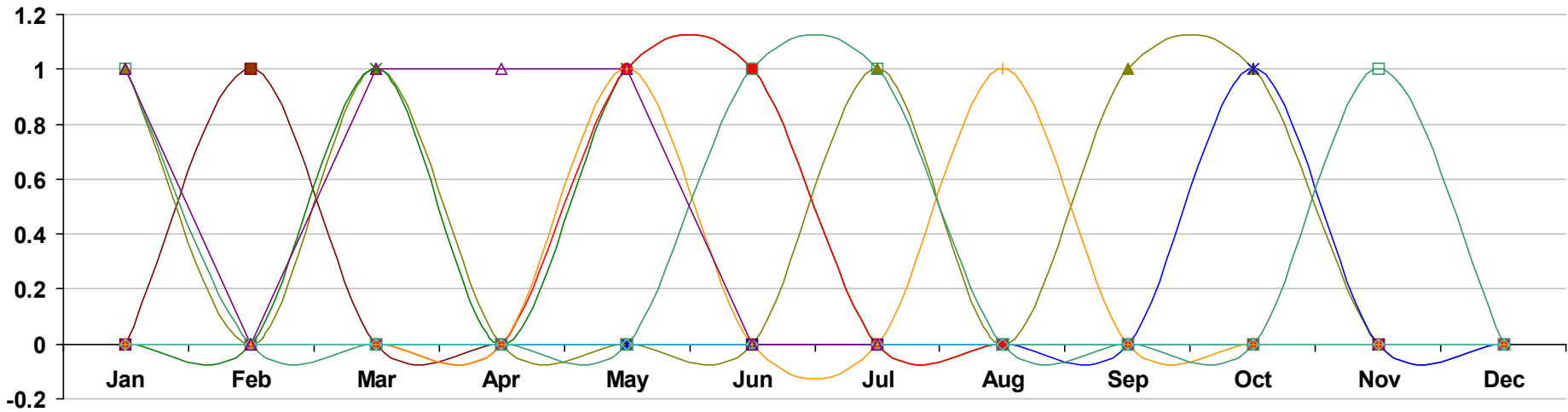


■ 2009	6.1 -51.2%	6.1 -51.2%	2.4 -80.8%	2.4 -90.4%	2.4 -90.4%	2.4 -90.4%	2.4 -90.4%	2.4 -95.2%	3.0 -87.2%	5.9 -3.3%	5.9 -26.2%	12.5 104.9%
◆ 2010	25.0 309.8%	25.0 309.8%	0.0 -100.0%	0.0 -100.0%	0.0 -100.0%	0.0 -100.0%	0.0 -100.0%	0.0 -100.0%	0.0 -100.0%	0.0 -100.0%	0.0 -100.0%	0.0 -100.0%
▲ 2011	0.0 -100.0%	0.0 -100.0%	37.5 100.0%	23.5 100.0%	23.5 100.0%	23.5 100.0%	23.5 100.0%	23.5 100.0%	8.0 100.0%	8.0 100.0%	4.8 100.0%	4.8 100.0%
✕ 2012	7.1 100.0%	7.1 100.0%	9.1 -75.7%	12.1 -48.5%	9.1 -61.3%	9.1 -61.3%	7.1 -69.8%	4.0 -83.0%	4.8 -40.0%	4.8 -40.0%	8.0 66.7%	4.0 -16.7%
✱ 2013	4.0 -43.7%	4.0 -43.7%	8.0 -12.1%	5.9 -51.2%	5.9 -35.2%	5.9 -35.2%	12.5 76.1%	0.0 -100.0%	0.0 -100.0%	0.0 -100.0%	12.5 56.2%	0.0 -100.0%
● 2014	12.5 212.5%	12.5 212.5%	12.5 56.2%	12.5 111.9%	0.0 -100.0%	5.9 0.0%	4.0 -68.0%	0.0 0.0%	0.0 0.0%	4.0 100.0%	5.9 -52.8%	5.9 100.0%
+ 2015	11.8 -5.6%	17.6 40.8%	17.6 40.8%	17.6 40.8%	17.6 100.0%	37.5 535.6%	62.5 1,462.5%	62.5 100.0%	23.5 100.0%	35.3 782.5%	35.3 498.3%	35.3 498.3%
□ 2016	29.4 149.2%	35.3 100.6%	28.0 59.1%	28.0 59.1%	28.0 59.1%	28.0 -25.3%	28.0 -55.2%	28.0 -55.2%	41.2 75.3%	20.0 -43.3%	16.0 -54.7%	12.1 -65.7%
◇ 2017	12.1 -58.8%	12.1 -65.7%	20.0 -28.6%	16.0 -42.9%	20.0 -28.6%	20.0 -28.6%	23.5 -16.1%	23.5 -16.1%	29.4 -28.6%	50.0 150.0%	50.0 212.5%	0.0 -100.0%
△ 2018	0.0 -100.0%	0.0 -100.0%	0.0 -100.0%	5.9 -63.1%	0.0 -100.0%	0.0 -100.0%	0.0 -100.0%	0.0 -100.0%				

Market History Report © 2018 TREND. Compiled 9/17/2018. Information deemed reliable, but not guaranteed. Non-members contact TREND for reprint permission.

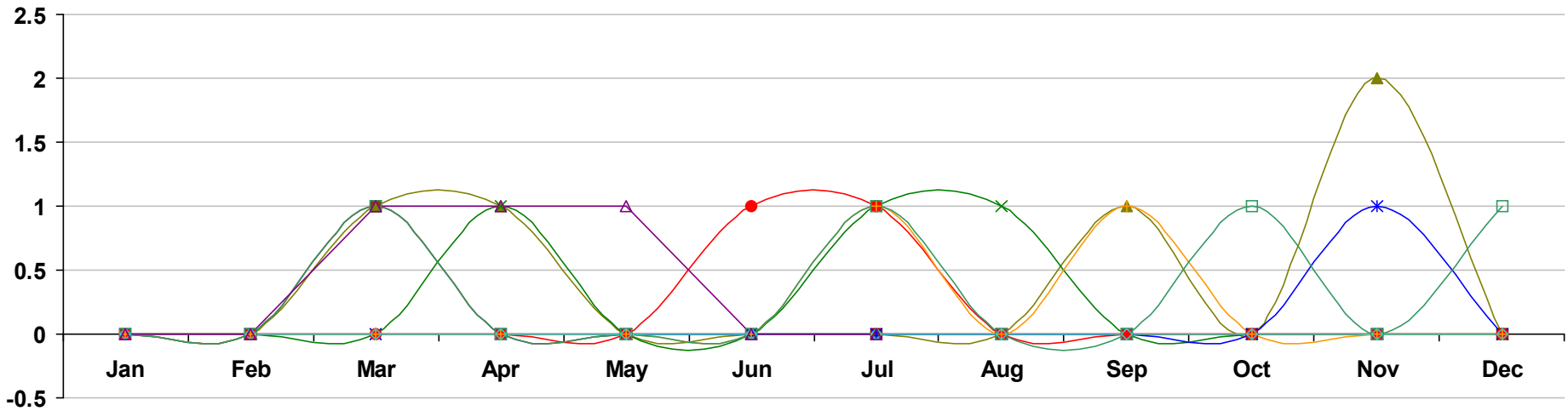
TREND • 660 American Avenue, Suite 203 • King of Prussia, PA 19406 • 1-877-330-9900 • www.trendmls.com

Schuylkill County, PA - Condo - Pending Units



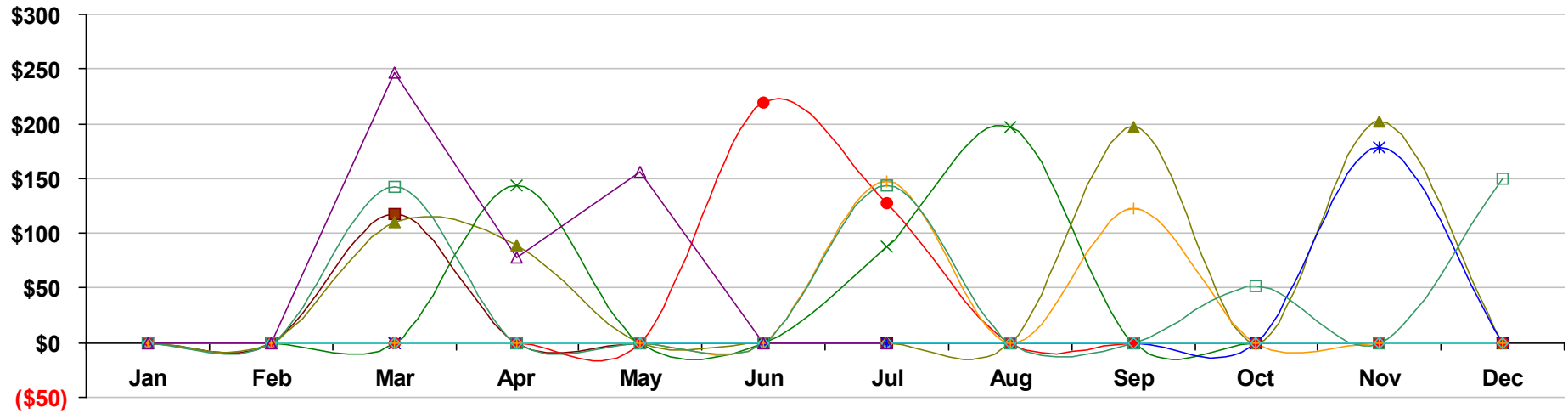
■ 2009	0 0.0%	1 100.0%	0 0.0%	0 0.0%	0 0.0%	0 0.0%	0 0.0%	0 0.0%	0 -100.0%	0 -100.0%	0 0.0%	0 0.0%	0 -100.0%
◆ 2010	0 0.0%	0 -100.0%	0 0.0%	0 0.0%	0 0.0%	0 0.0%	0 0.0%	0 0.0%	0 0.0%	0 0.0%	0 0.0%	0 0.0%	0 0.0%
▲ 2011	1 100.0%	0 0.0%	1 100.0%	0 0.0%	0 0.0%	0 0.0%	1 100.0%	0 0.0%	1 100.0%	1 100.0%	1 100.0%	0 0.0%	0 0.0%
✕ 2012	0 -100.0%	0 0.0%	1 0.0%	0 0.0%	1 100.0%	1 100.0%	0 -100.0%	0 0.0%	0 -100.0%	0 -100.0%	0 -100.0%	0 0.0%	0 0.0%
✱ 2013	0 0.0%	0 0.0%	0 -100.0%	0 0.0%	0 -100.0%	0 -100.0%	0 0.0%	0 0.0%	0 0.0%	0 0.0%	1 100.0%	0 0.0%	0 0.0%
● 2014	0 0.0%	0 0.0%	0 0.0%	0 0.0%	1 100.0%	1 100.0%	0 0.0%	0 0.0%	0 0.0%	0 0.0%	0 -100.0%	0 0.0%	0 0.0%
✚ 2015	0 0.0%	0 0.0%	0 0.0%	0 0.0%	1 0.0%	0 -100.0%	0 0.0%	1 100.0%	0 0.0%	0 0.0%	0 0.0%	0 0.0%	0 0.0%
◻ 2016	1 100.0%	0 0.0%	0 0.0%	0 0.0%	0 -100.0%	1 100.0%	1 100.0%	0 -100.0%	0 0.0%	0 0.0%	0 0.0%	1 100.0%	0 0.0%
◇ 2017	0 -100.0%	0 0.0%	0 0.0%	0 0.0%	0 0.0%	0 -100.0%	0 -100.0%	0 0.0%	0 0.0%	0 0.0%	0 0.0%	0 -100.0%	0 0.0%
△ 2018	1 100.0%	0 0.0%	1 100.0%	1 100.0%	1 100.0%	0 0.0%	0 0.0%						

Schuylkill County, PA - Condo - Settled Units



2009	0	0	1	0	0	0	0	0	0	0	0	0
	0.0%	0.0%	100.0%	0.0%	0.0%	0.0%	0.0%	0.0%	0.0%	-100.0%	-100.0%	0.0%
2010	0	0	0	0	0	0	0	0	0	0	0	0
	0.0%	0.0%	-100.0%	0.0%	0.0%	0.0%	0.0%	0.0%	0.0%	0.0%	0.0%	0.0%
2011	0	0	1	1	0	0	0	0	1	0	2	0
	0.0%	0.0%	100.0%	100.0%	0.0%	0.0%	0.0%	0.0%	100.0%	0.0%	100.0%	0.0%
2012	0	0	0	1	0	0	1	1	0	0	0	0
	0.0%	0.0%	-100.0%	0.0%	0.0%	0.0%	100.0%	100.0%	-100.0%	0.0%	-100.0%	0.0%
2013	0	0	0	0	0	0	0	0	0	0	1	0
	0.0%	0.0%	0.0%	-100.0%	0.0%	0.0%	-100.0%	-100.0%	0.0%	0.0%	100.0%	0.0%
2014	0	0	0	0	0	1	1	0	0	0	0	0
	0.0%	0.0%	0.0%	0.0%	0.0%	100.0%	100.0%	0.0%	0.0%	0.0%	-100.0%	0.0%
2015	0	0	0	0	0	0	1	0	1	0	0	0
	0.0%	0.0%	0.0%	0.0%	0.0%	-100.0%	0.0%	0.0%	100.0%	0.0%	0.0%	0.0%
2016	0	0	1	0	0	0	1	0	0	1	0	1
	0.0%	0.0%	100.0%	0.0%	0.0%	0.0%	0.0%	0.0%	-100.0%	100.0%	0.0%	100.0%
2017	0	0	0	0	0	0	0	0	0	0	0	0
	0.0%	0.0%	-100.0%	0.0%	0.0%	0.0%	-100.0%	0.0%	0.0%	-100.0%	0.0%	-100.0%
2018	0	0	1	1	1	0	0	0	0	0	0	0
	0.0%	0.0%	100.0%	100.0%	100.0%	0.0%	0.0%	0.0%	0.0%	0.0%	0.0%	0.0%

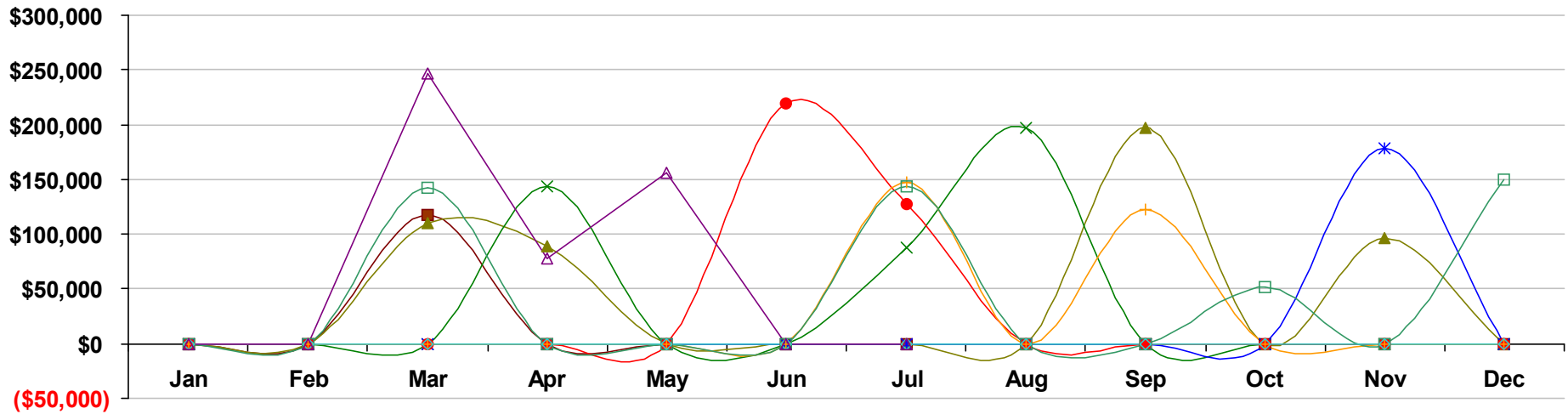
Schuylkill County, PA - Condo - Total Settled Volume



	Jan	Feb	Mar	Apr	May	Jun	Jul	Aug	Sep	Oct	Nov	Dec	
2009	\$0 0.0%	\$0 0.0%	\$118 100.0%	\$0 0.0%	\$0 0.0%	\$0 0.0%	\$0 0.0%	\$0 0.0%	\$0 0.0%	\$0 -100.0%	\$0 -100.0%	\$0 0.0%	\$0 -100.0%
2010	\$0 0.0%	\$0 0.0%	\$0 -100.0%	\$0 0.0%	\$0 0.0%	\$0 0.0%	\$0 0.0%	\$0 0.0%	\$0 0.0%	\$0 0.0%	\$0 0.0%	\$0 0.0%	\$0 0.0%
2011	\$0 0.0%	\$0 0.0%	\$110 100.0%	\$89 100.0%	\$0 0.0%	\$0 0.0%	\$0 0.0%	\$0 0.0%	\$197 100.0%	\$0 0.0%	\$202 100.0%	\$0 0.0%	\$0 0.0%
2012	\$0 0.0%	\$0 0.0%	\$0 -100.0%	\$144 61.8%	\$0 0.0%	\$0 0.0%	\$88 100.0%	\$197 100.0%	\$0 -100.0%	\$0 0.0%	\$0 -100.0%	\$0 0.0%	\$0 0.0%
2013	\$0 0.0%	\$0 0.0%	\$0 0.0%	\$0 -100.0%	\$0 0.0%	\$0 0.0%	\$0 -100.0%	\$0 -100.0%	\$0 0.0%	\$0 0.0%	\$178 100.0%	\$0 0.0%	\$0 0.0%
2014	\$0 0.0%	\$0 0.0%	\$0 0.0%	\$0 0.0%	\$0 0.0%	\$219 100.0%	\$128 100.0%	\$0 0.0%	\$0 0.0%	\$0 0.0%	\$0 -100.0%	\$0 0.0%	\$0 0.0%
2015	\$0 0.0%	\$0 0.0%	\$0 0.0%	\$0 0.0%	\$0 0.0%	\$0 -100.0%	\$147 14.8%	\$0 0.0%	\$123 100.0%	\$0 0.0%	\$0 0.0%	\$0 0.0%	\$0 0.0%
2016	\$0 0.0%	\$0 0.0%	\$142 100.0%	\$0 0.0%	\$0 0.0%	\$0 0.0%	\$144 -2.0%	\$0 0.0%	\$0 -100.0%	\$52 100.0%	\$0 0.0%	\$150 100.0%	
2017	\$0 0.0%	\$0 0.0%	\$0 -100.0%	\$0 0.0%	\$0 0.0%	\$0 0.0%	\$0 -100.0%	\$0 0.0%	\$0 0.0%	\$0 -100.0%	\$0 0.0%	\$0 -100.0%	
2018	\$0 0.0%	\$0 0.0%	\$247 100.0%	\$78 100.0%	\$156 100.0%	\$0 0.0%	\$0 0.0%						

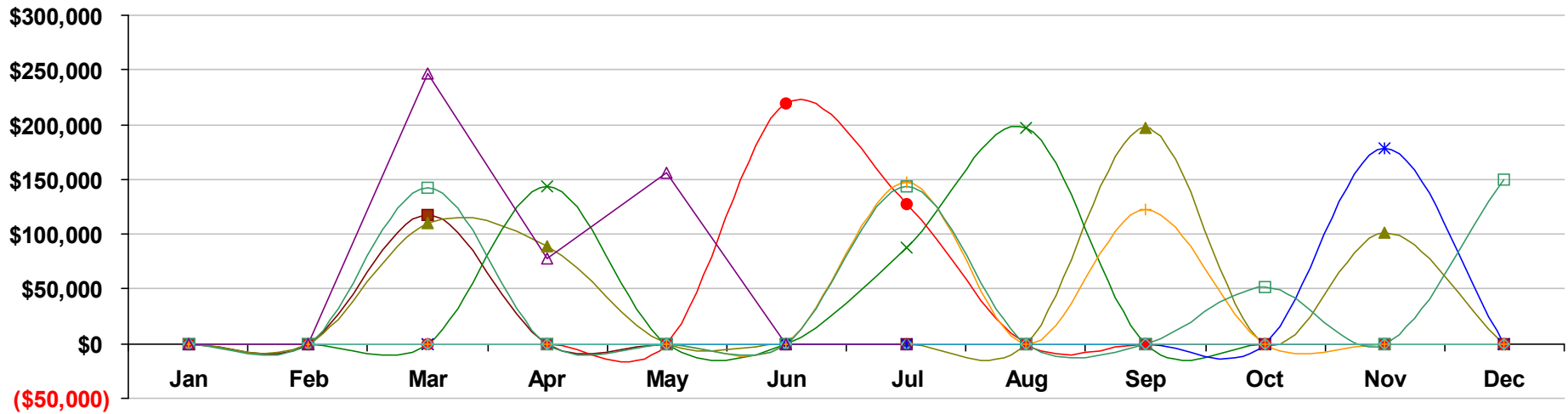
Values on this report are displayed in Thousands

Schuylkill County, PA - Condo - Median Settled Price



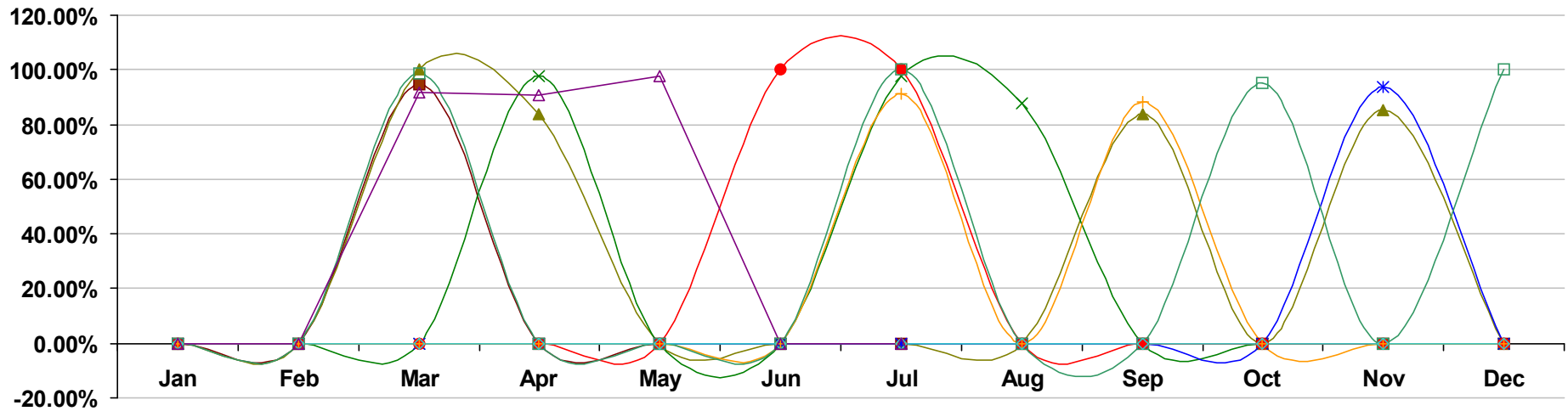
	Jan	Feb	Mar	Apr	May	Jun	Jul	Aug	Sep	Oct	Nov	Dec
2009	\$0 0.0%	\$0 0.0%	\$118,000 100.0%	\$0 0.0%	\$0 0.0%	\$0 0.0%	\$0 0.0%	\$0 0.0%	\$0 -100.0%	\$0 -100.0%	\$0 0.0%	\$0 -100.0%
2010	\$0 0.0%	\$0 0.0%	\$0 -100.0%	\$0 0.0%	\$0 0.0%	\$0 0.0%	\$0 0.0%	\$0 0.0%	\$0 0.0%	\$0 0.0%	\$0 0.0%	\$0 0.0%
2011	\$0 0.0%	\$0 0.0%	\$110,000 100.0%	\$89,000 100.0%	\$0 0.0%	\$0 0.0%	\$0 0.0%	\$0 0.0%	\$197,000 100.0%	\$0 0.0%	\$97,000 100.0%	\$0 0.0%
2012	\$0 0.0%	\$0 0.0%	\$0 -100.0%	\$144,000 61.8%	\$0 0.0%	\$0 0.0%	\$88,000 100.0%	\$197,000 100.0%	\$0 -100.0%	\$0 0.0%	\$0 -100.0%	\$0 0.0%
2013	\$0 0.0%	\$0 0.0%	\$0 0.0%	\$0 -100.0%	\$0 0.0%	\$0 0.0%	\$0 -100.0%	\$0 -100.0%	\$0 0.0%	\$0 0.0%	\$178,000 100.0%	\$0 0.0%
2014	\$0 0.0%	\$0 0.0%	\$0 0.0%	\$0 0.0%	\$0 0.0%	\$219,000 100.0%	\$128,000 100.0%	\$0 0.0%	\$0 0.0%	\$0 0.0%	\$0 -100.0%	\$0 0.0%
2015	\$0 0.0%	\$0 0.0%	\$0 0.0%	\$0 0.0%	\$0 0.0%	\$0 -100.0%	\$147,000 14.8%	\$0 0.0%	\$123,000 100.0%	\$0 0.0%	\$0 0.0%	\$0 0.0%
2016	\$0 0.0%	\$0 0.0%	\$142,000 100.0%	\$0 0.0%	\$0 0.0%	\$0 0.0%	\$144,000 -2.0%	\$0 0.0%	\$0 -100.0%	\$52,000 100.0%	\$0 0.0%	\$150,000 100.0%
2017	\$0 0.0%	\$0 0.0%	\$0 -100.0%	\$0 0.0%	\$0 0.0%	\$0 0.0%	\$0 -100.0%	\$0 0.0%	\$0 0.0%	\$0 -100.0%	\$0 0.0%	\$0 -100.0%
2018	\$0 0.0%	\$0 0.0%	\$247,000 100.0%	\$78,000 100.0%	\$156,000 100.0%	\$0 0.0%	\$0 0.0%					

Schuylkill County, PA - Condo - Average Settled Price



	Jan	Feb	Mar	Apr	May	Jun	Jul	Aug	Sep	Oct	Nov	Dec
2009	\$0 0.0%	\$0 0.0%	\$118,000 100.0%	\$0 0.0%	\$0 0.0%	\$0 0.0%	\$0 0.0%	\$0 0.0%	\$0 -100.0%	\$0 -100.0%	\$0 0.0%	\$0 -100.0%
2010	\$0 0.0%	\$0 0.0%	\$0 -100.0%	\$0 0.0%	\$0 0.0%	\$0 0.0%	\$0 0.0%	\$0 0.0%	\$0 0.0%	\$0 0.0%	\$0 0.0%	\$0 0.0%
2011	\$0 0.0%	\$0 0.0%	\$110,000 100.0%	\$89,000 100.0%	\$0 0.0%	\$0 0.0%	\$0 0.0%	\$0 0.0%	\$197,000 100.0%	\$0 0.0%	\$101,000 100.0%	\$0 0.0%
2012	\$0 0.0%	\$0 0.0%	\$0 -100.0%	\$144,000 61.8%	\$0 0.0%	\$0 0.0%	\$88,000 100.0%	\$197,000 100.0%	\$0 -100.0%	\$0 0.0%	\$0 -100.0%	\$0 0.0%
2013	\$0 0.0%	\$0 0.0%	\$0 0.0%	\$0 -100.0%	\$0 0.0%	\$0 0.0%	\$0 -100.0%	\$0 -100.0%	\$0 0.0%	\$0 0.0%	\$178,000 100.0%	\$0 0.0%
2014	\$0 0.0%	\$0 0.0%	\$0 0.0%	\$0 0.0%	\$0 0.0%	\$219,000 100.0%	\$128,000 100.0%	\$0 0.0%	\$0 0.0%	\$0 0.0%	\$0 -100.0%	\$0 0.0%
2015	\$0 0.0%	\$0 0.0%	\$0 0.0%	\$0 0.0%	\$0 0.0%	\$0 -100.0%	\$147,000 14.8%	\$0 0.0%	\$123,000 100.0%	\$0 0.0%	\$0 0.0%	\$0 0.0%
2016	\$0 0.0%	\$0 0.0%	\$142,000 100.0%	\$0 0.0%	\$0 0.0%	\$0 0.0%	\$144,000 -2.0%	\$0 0.0%	\$0 -100.0%	\$52,000 100.0%	\$0 0.0%	\$150,000 100.0%
2017	\$0 0.0%	\$0 0.0%	\$0 -100.0%	\$0 0.0%	\$0 0.0%	\$0 0.0%	\$0 -100.0%	\$0 0.0%	\$0 0.0%	\$0 -100.0%	\$0 0.0%	\$0 -100.0%
2018	\$0 0.0%	\$0 0.0%	\$247,000 100.0%	\$78,000 100.0%	\$156,000 100.0%	\$0 0.0%	\$0 0.0%					

Schuylkill County, PA - Condo - Average Settled Price/Original Price



■ 2009	0.0%	0.0%	94.5%	0.0%	0.0%	0.0%	0.0%	0.0%	0.0%	0.0%	0.0%	0.0%
◆ 2010	0.0%	0.0%	0.0%	0.0%	0.0%	0.0%	0.0%	0.0%	0.0%	0.0%	0.0%	0.0%
▲ 2011	0.0%	0.0%	100.0%	84.0%	0.0%	0.0%	0.0%	0.0%	84.0%	0.0%	85.2%	0.0%
× 2012	0.0%	0.0%	0.0%	97.6%	0.0%	0.0%	97.9%	87.8%	0.0%	0.0%	0.0%	0.0%
✱ 2013	0.0%	0.0%	0.0%	0.0%	0.0%	0.0%	0.0%	0.0%	0.0%	0.0%	93.9%	0.0%
● 2014	0.0%	0.0%	0.0%	0.0%	0.0%	100.0%	100.0%	0.0%	0.0%	0.0%	0.0%	0.0%
+ 2015	0.0%	0.0%	0.0%	0.0%	0.0%	0.0%	91.1%	0.0%	88.3%	0.0%	0.0%	0.0%
□ 2016	0.0%	0.0%	98.6%	0.0%	0.0%	0.0%	100.0%	0.0%	0.0%	95.4%	0.0%	100.3%
◇ 2017	0.0%	0.0%	0.0%	0.0%	0.0%	0.0%	0.0%	0.0%	0.0%	0.0%	0.0%	0.0%
△ 2018	0.0%	0.0%	91.7%	90.7%	97.5%	0.0%	0.0%	0.0%	0.0%	0.0%	0.0%	0.0%